

Block 16/25

Friendship Block

One Hundred Eighty-Two Day Solstice Challenge
Hosted by Pat Sloan At Ilovetomakequilts.com

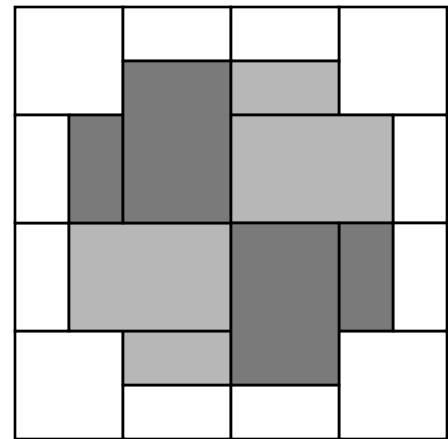
As I'm working on this I'm also getting ready to take the evening off and sew with my local friends. What I find amazing is that in this group of about 15 people there are some I've been sewing with for over 20 years

Meeting once a month to catch up in person is so much fun. We laugh, we share, we swap stories and have a great time.

If you have not found a local buddy or two, go find some, even if you have to teach them how to quilt or sew, it's so worth it!

The Solstice challenge spans 182 days between the winter and summer Solstice this year. Well be making a quilt with 25 blocks... and Somewhere along this journey I'll give you a setting.

Enter your email to get the notice of each new block, and join my online group to can share with everyone!



SQUARE Block to 12.5" x 12.5"
Finished in the quilt is Size 12"

Cutting & Sewing

Light Fabric

- Cut 4 squares 3.5" x 3.5"
- Cut 8 rectangles 2" x 3.5"

Medium Fabric

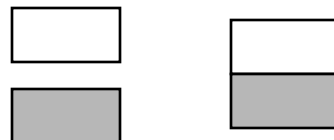
- Cut 2 rectangles 2" x 3.5"
- Cut 2 rectangles 3.5" x 5"

Dark Fabric

- Cut 2 rectangles 2" x 3.5"
- Cut 2 rectangles 3.5" x 5"

Directions

- 1) Sew a light rectangle to a Medium small Rectangle
Make 2 units - Measures to 3.5" x 3.5"



- 2) Sew a light rectangle to a Dark small Rectangle
Make 2 units - Measures to 3.5" x 3.5"



Pat Sloan the voice of quilting™
www.patsloan.com

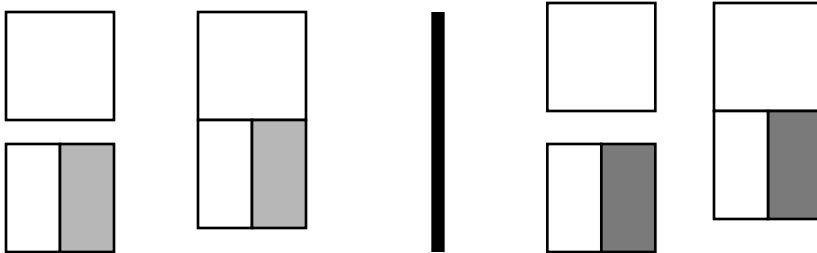
I Love to Make Quilts.com

A site for Passionate Quilters
Hosted by Pat Sloan

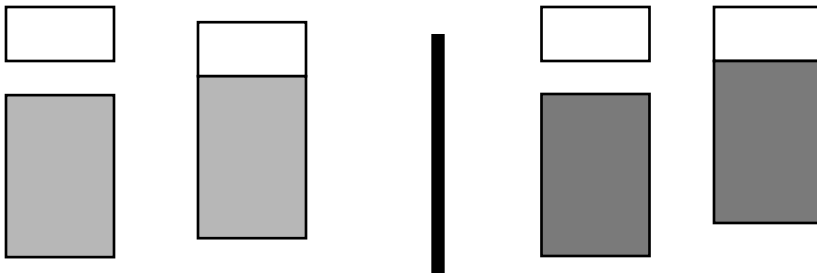
Website PatSloan.com - Articles & Tutorials blog.PatSloan.com
Online Community [Facebook.com/PatSloanQuiltFun](https://www.facebook.com/PatSloanQuiltFun)

Directions

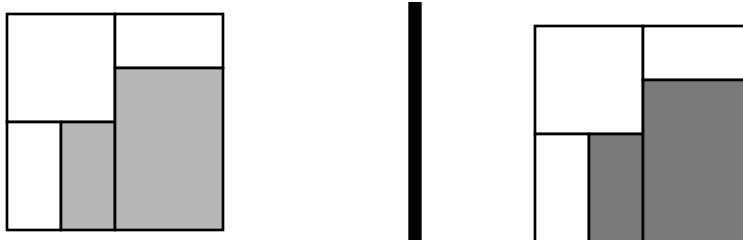
- 3) Sew the square to the top of the previous units
Make 4 units, 2 of each color - Measures 3.5" x 6.5"



- 4) Sew the light rectangle to the top of the large rectangles
Make 4 units, 2 of each color - Measures 3.5" x 6.5"



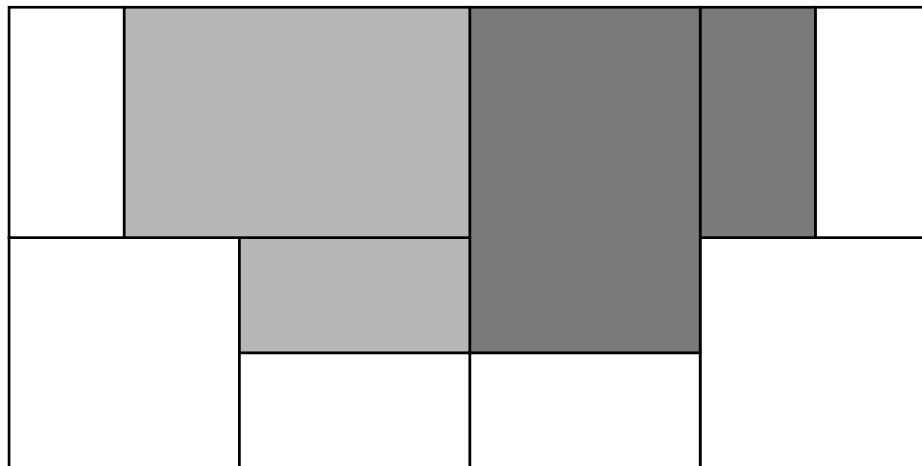
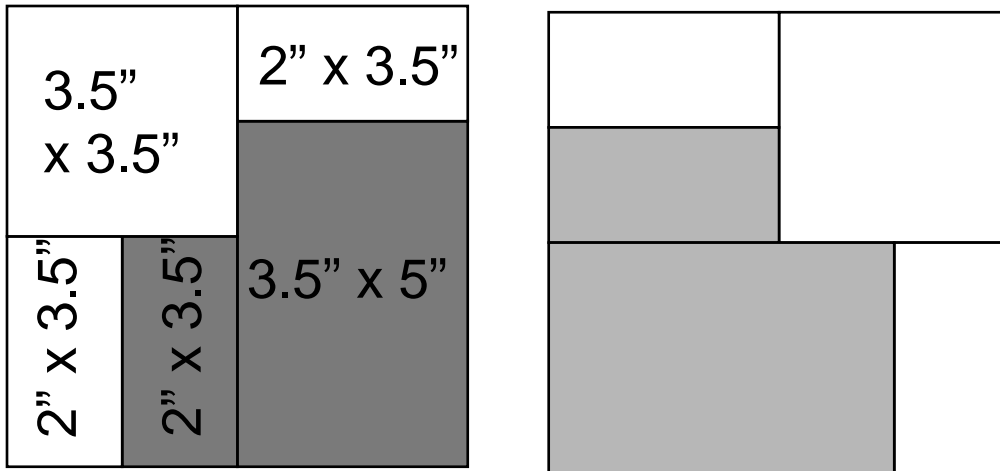
- 5) Sew these together to make one unit of the block
Make 4 units, 2 of each color - Measures 6.5" x 6.5"
See next page for sewing the final block



**See my teaching
Books
Applique,
Triangles
And
Machine Quilting.**

**All my books
have Step by Step
photos of how
to do
the techniques**

Cutting Sizes



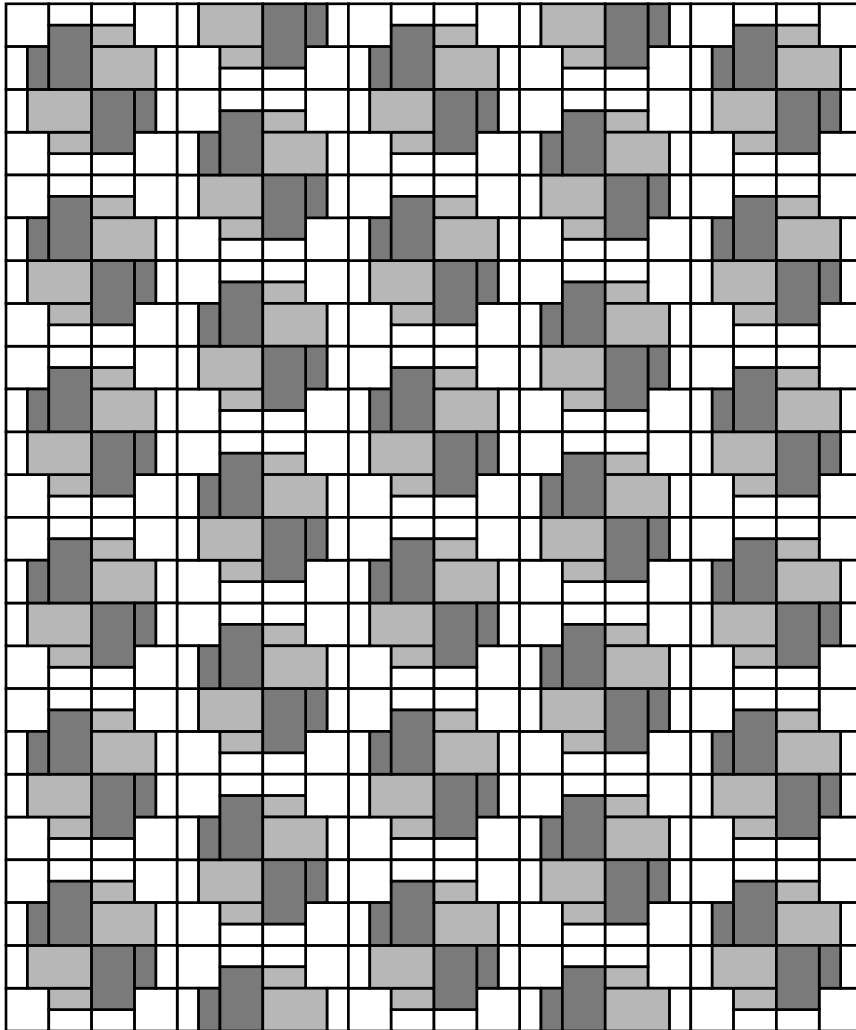
Square the Block to 12.5" x 12.5"

IN the Quilt it is finished size 12" x 12"

I Love to Make Quilts.com

A site for Passionate Quilters

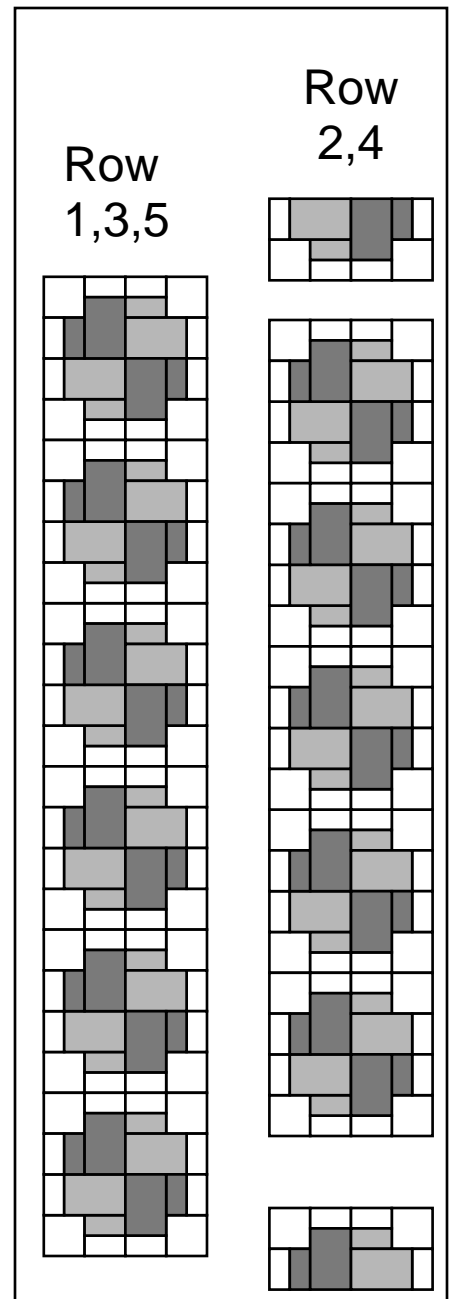
Hosted by Pat Sloan



60" x 72"

28 whole blocks

4 half blocks



Pat Sloan the voice of quilting™
www.patsloan.com

Website PatSloan.com - Articles & Tutorials blog.PatSloan.com
Online Community Facebook.com/PatSloanQuiltFun