

I Love to Make Quilts.com

A site for Passionate Quilters

Hosted by Pat Sloan



**Pat Sloan's Free Weekly Mystery
Find at ILoveToMakeQuilts.com
Join my Facebook group Quilt Along with Pat Sloan
Supply list**

Website PatSloan.com - Articles & Tutorials blog.PatSloan.com
facebook.com/groups/QuiltWithPatSloan/

Pat Sloan the voice of quilting™
www.patsloan.com

I Love to Make Quilts.com

A site for Passionate Quilters

Hosted by Pat Sloan

Hi I'm Designer, Author, & Podcast host **Pat Sloan**,
thank you for joining me to make my 2nd
2018 Weekly Block Mystery Quilt!

2018 Merry and Bright!

Each week join me to celebrate Christmas Traditions
and memories! This sew along will feature SUPER easy blocks
using Christmas Fabric.

At the end we'll have a wonderful Quilt of memories!

The Details

Runs: Weekly July 25 2018 to Nov 28, 2018

Number of Blocks: 19

Block Size: 9" finished. 9.5" before being sewn into the quilt

Quilt Size: approx 60" x 77"

- **New Blocks** posted on Wednesday at my website lovetomakequilts.com
- **Supply list** on the following pages
- **Mostly pieced blocks**, with some applique
- **NOTE** - The blocks are not pictorial. My theme is a way to have weekly fun with a Christmas memory

Sign up for my notices at my website

Join me at my Facebook Group 'Quilt with Pat Sloan'

I Love to Make Quilts.com

A site for Passionate Quilters
Hosted by Pat Sloan



1 1 1/2 yds
for background
Grunge Basics
Vanilla Yardage



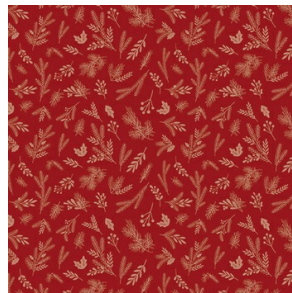
2 FQ Bundle
Christmas Delivery
Riley Blake
23 Fat Quarters



3 1/2 yd
Christmas Delivery
Green Floral Yardage
SKU# C7332-GREEN



4 1/2 yd
Christmas Delivery
Red Snowflakes Yardage
SKU# C7333-RED



5 1/2 yd
Christmas Delivery
Red Sprigs Yardage
SKU# C7334-RED



6 2 yds
Border Fabric
Christmas Delivery
Red Plaid Yardage
SKU# C7336-RED

Supply list NOTES

I make the blocks each week working from this collection.

I decided on binding color at the end.

The Riley Blake Collection is new
There are many other wonderful
Christmas fabrics you can
select from.

Backing - 5 yds
Binding - 1 yd