

# A Flower Bouquet

## Block 11/20 – Green Grass

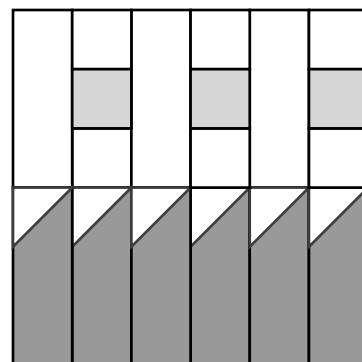
Hosted by Pat Sloan At [lovetomakequilts.com](http://lovetomakequilts.com)

“It’s good to touch the green, green grass of home” -  
Anyone recognize that Tom Jones song?

Our lawn is a big part of our garden. It’s often the largest ‘plant’ we take care of all summer. Water, feed, weed, and mowing it are pretty time consuming. I love the smell of cut grass and I love how it looks when it’s freshly cut. Like a new hair do!

This past summer we had a lot of rain, way more than usual and our lawn loved it. The shipping department (my husband) not so much as more mowing was needed. As a quilter we can remember that everything goes with green, just look at nature!

“It was June, and the world smelled of roses. The sunshine was like powdered gold over the grassy hillside.”  
— Maud Hart Lovelace, Betsy-Tacy and Tib



**Blocks are 12.5” x 12.5”**  
Finished size 12” x 12”

Enter your email for my notice of each new block release & join my online group to share with everyone!

## Ruler Cutting

### Light fabrics

- Cut 3 strips 2.5” x 6.5”
- Cut 12 squares 2.5” x 2.5”

### Medium fabrics

- Cut 3 squares 2.5” x 2.5”

### Dark fabrics

- Cut 6 strips 2.5” x 6.5”



## Gemini Die Cutting + Ruler

### Light fabrics

- Cut 12 squares 2.5” x 2.5”

### Medium fabrics

- Cut 3 squares 2.5” x 2.5”

## Ruler

### Light fabrics

- Cut 3 strips 2.5” x 6.5”

### Dark fabrics

- Cut 6 strips 2.5” x 6.5”

### TIP!

This is a **GREAT** Block for using of scraps

### See my Book

“Pat Sloan’s Teach Me to Sew Triangles”  
For Step by Step photos and methods to  
make more at one time

*I Love to Make Quilts.com*

A site for Passionate Quilters  
Hosted by Pat Sloan

Website [PatSloan.com](http://PatSloan.com) - Articles & Tutorials [blog.PatSloan.com](http://blog.PatSloan.com)  
Online Community [Facebook.com/PatSloanQuiltFun](https://www.facebook.com/PatSloanQuiltFun)

# I Love to Make Quilts.com

A site for Passionate Quilters

Hosted by Pat Sloan

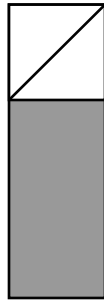
## Directions

1) Draw a Diagonal Line on 6 of the Light 2.5" squares.

Following the diagram Place the light 2.5" square on the dark strip Right sides together Sew ON the line.

Make 6

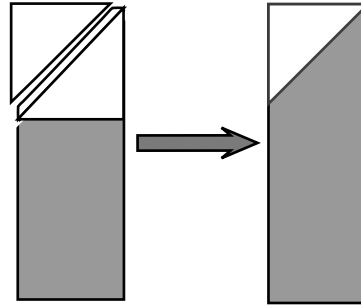
Measures 2.5" x 6.5"



2) Following the diagram trim away Leaving a 1/4" seam allowance.

Trim 6

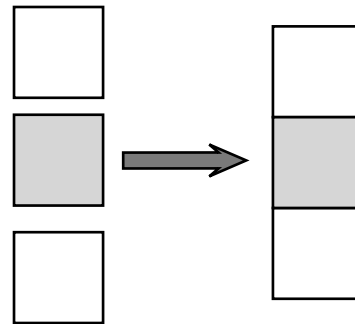
Measures 2.5" x 6.5"



3) Following the diagram alternate 2 light and 1 medium squares

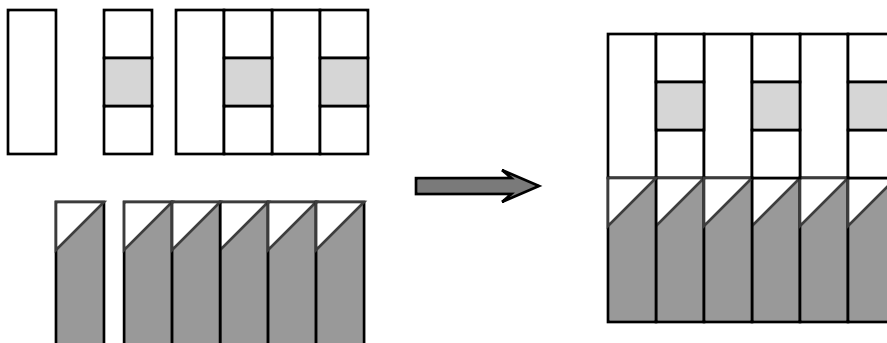
Make 3

Measures 2.5" x 6.5"



4) Following the diagram alternate light strips and pieced strips for the top row Sew all the Dark strip units together for the bottom row/

Measures 12.5" x 12.5"

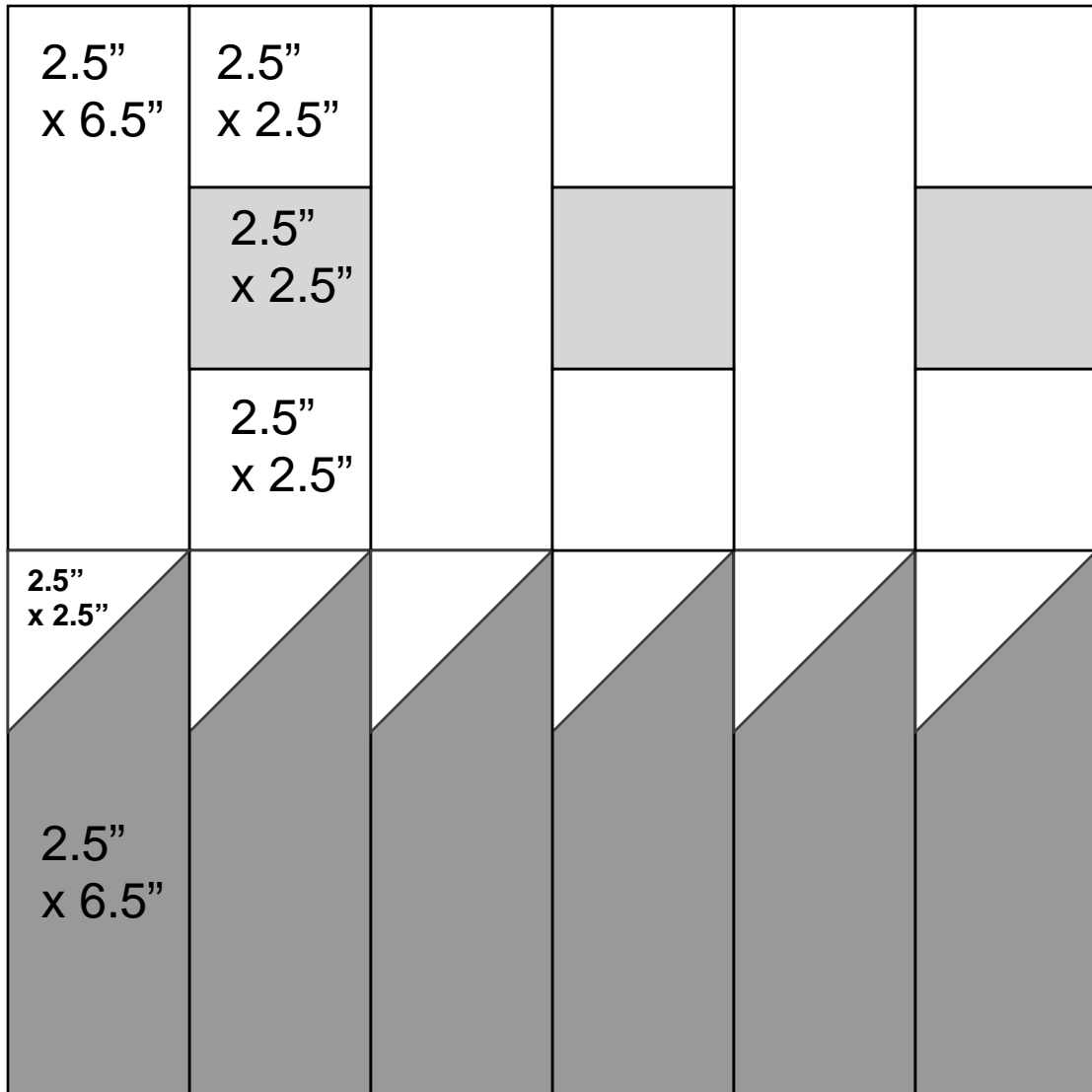


*Pat Sloan* the voice of quilting™  
www.patsloan.com

## Block 11/20 – Green Grass

## Unfinished / CUTTING Sizes

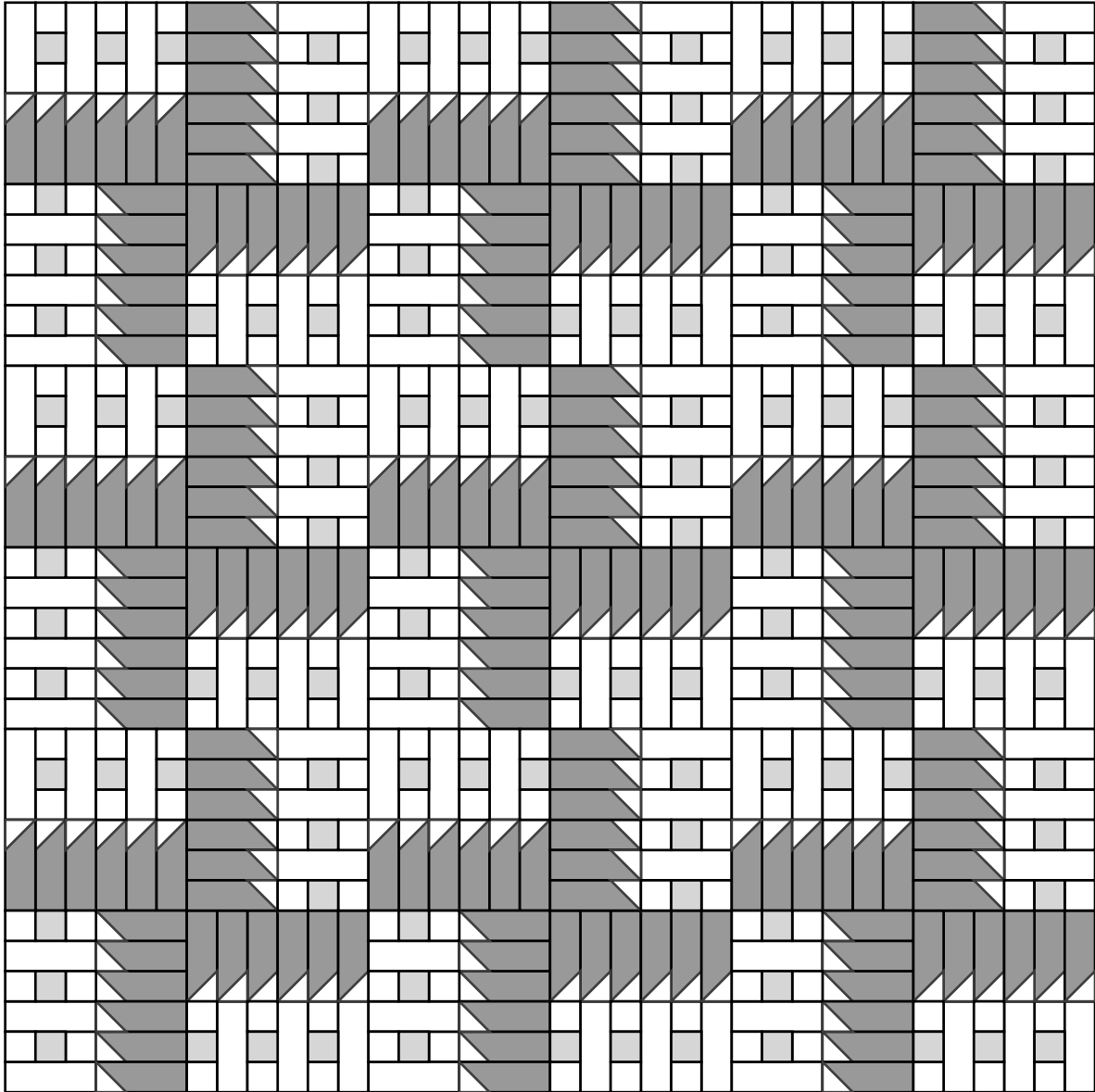
See directions for more details



**Block is 12.5" x 12.5"**

IN the Quilt it is finished size 12" x 12"

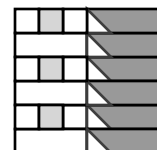
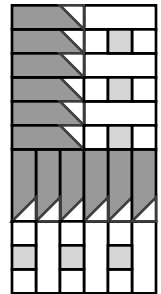
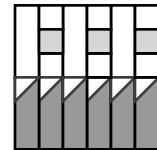
# A Flower Bouquet



**72.5" x 72.5"**

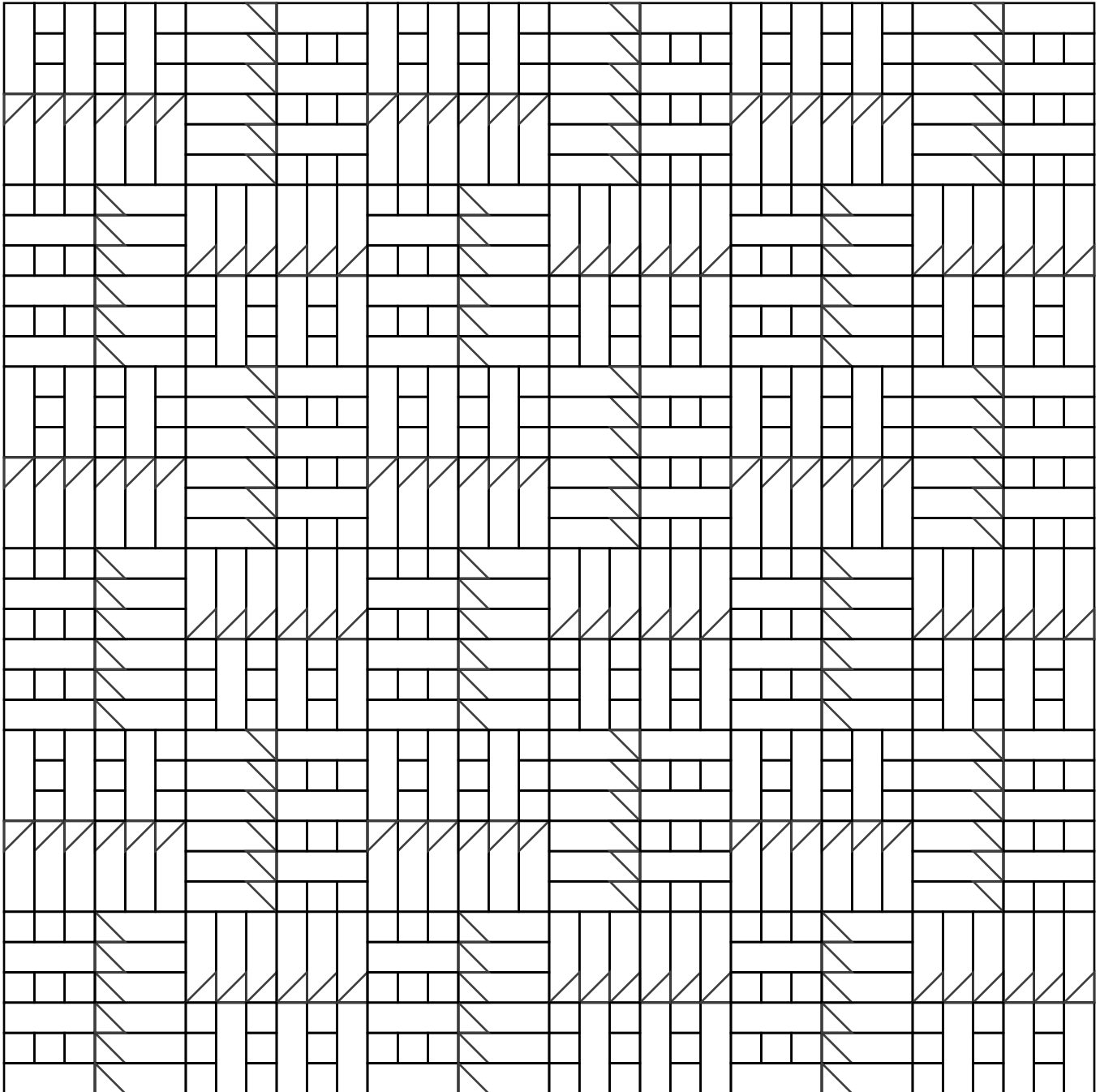
**36 blocks**

**Assemble 4 like the diagram for 1 unit**



*Pat Sloan* the voice of quilting™  
www.patsloan.com

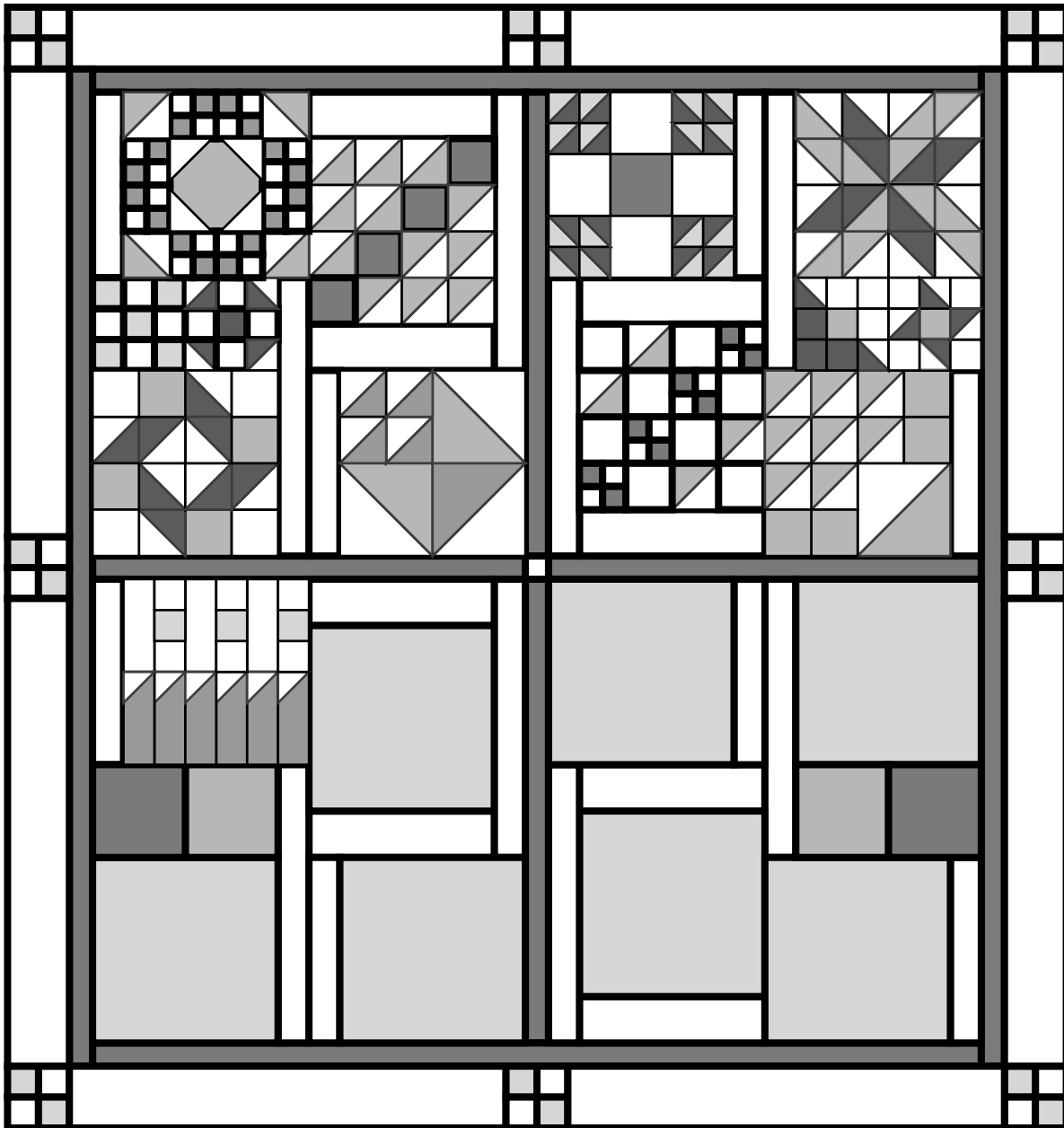
**Block 11/20**  
**Green Grass**



**Bonus! A Design page to color for fabric placement**

**Block 11/20 – Green Grass**

**(Page - 5)**



# A Flower Bouquet

## Block placement

**See project page for layout directions**