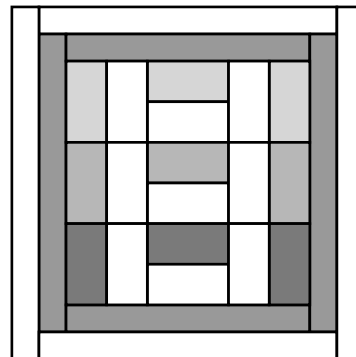


In The Summer Time

Block 13/20 – Cruise Main St.

Hosted by Pat Sloan At Ilovetomakequilts.com

The theme of this block was given by one of the quilters in my group and I love it! Having grown up with American Graffiti as a teen, I dreamed of cruising 'the Drag' with a dreamy boyfriend in a convertible. Or having a bunch of girlfriends riding along having fun!



SQUARE Block to 13.5" x 13.5"
Finished in the quilt is Size 13"

I grew up in Europe where nobody cruised and we didn't even drive as you had to be 18. So most kids didn't have access to a car. When I met my future husband, our date nights often included a trip around town to see who was out on a Friday or Saturday night. I loved that I finally had that 'American Graffiti' experience in the late 70s!

What car did you cruise Main Street in?

Enter your email for my notice of each new block release & join my online group to share with everyone!

Cutting & Sewing

Block Fabrics

Light Fabrics

– Cut 9 rectangles 2" x 3.5"

Medium Fabric #1 -

– Cut 3 rectangles 2" x 3.5"

Medium Fabric #2 -

– Cut 3 rectangles 2" x 3.5"

Dark Fabric

– Cut 3 rectangles 2" x 3.5"

Background Fabric

– Cut 2 rectangles 1.5" x 11.5"

– Cut 2 rectangles 1.5" x 13.5"

Inner Border Fabric

– Cut 2 rectangles 1.5" x 9.5"

– Cut 2 rectangles 1.5" x 11.5"

Pat Sloan
the voice of quilting™
www.patsloan.com

I Love to Make Quilts.com

Website PatSloan.com - Articles & Tutorials blog.PatSloan.com
Online Community [Facebook.com/PatSloanQuiltFun](https://www.facebook.com/PatSloanQuiltFun)

A site for Passionate Quilters
Hosted by Pat Sloan

Directions

1) Following the Diagram sew a light rectangle to a medium #1 rectangle

Make 3 units

Measures 3.5" x 3.5"



2) Following the Diagram below sew the 3 units from above together

Make 1 unit

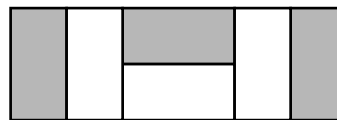
Measures 3.5" x 9.5"



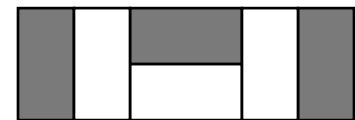
3) Following the Diagrams above repeat step #1 & step #2 using the medium #2 and dark strips

Make 1 unit of Medium #2 and Dark

Measures 3.5" x 9.5"



Medium #2

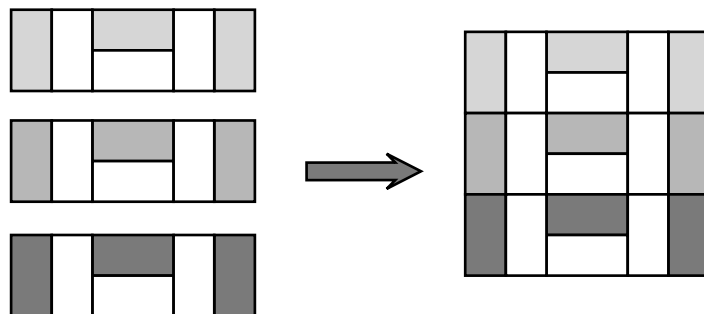


Dark

4) Sew the 3 rows together

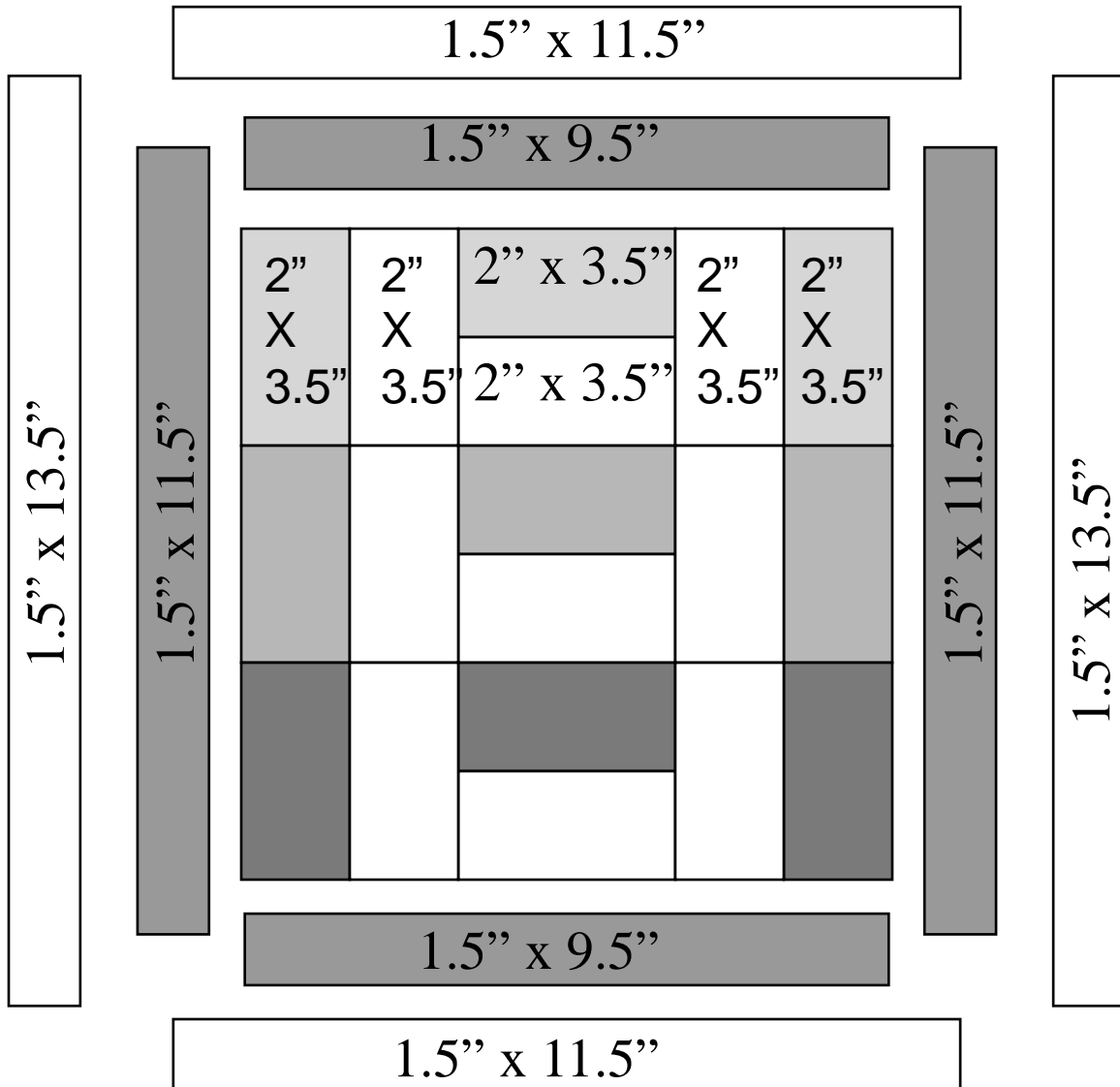
Make 1 unit

Measures 9.5" x 9.5"



Following the diagram on next page
Set the block into the frame

Unfinished Sizes



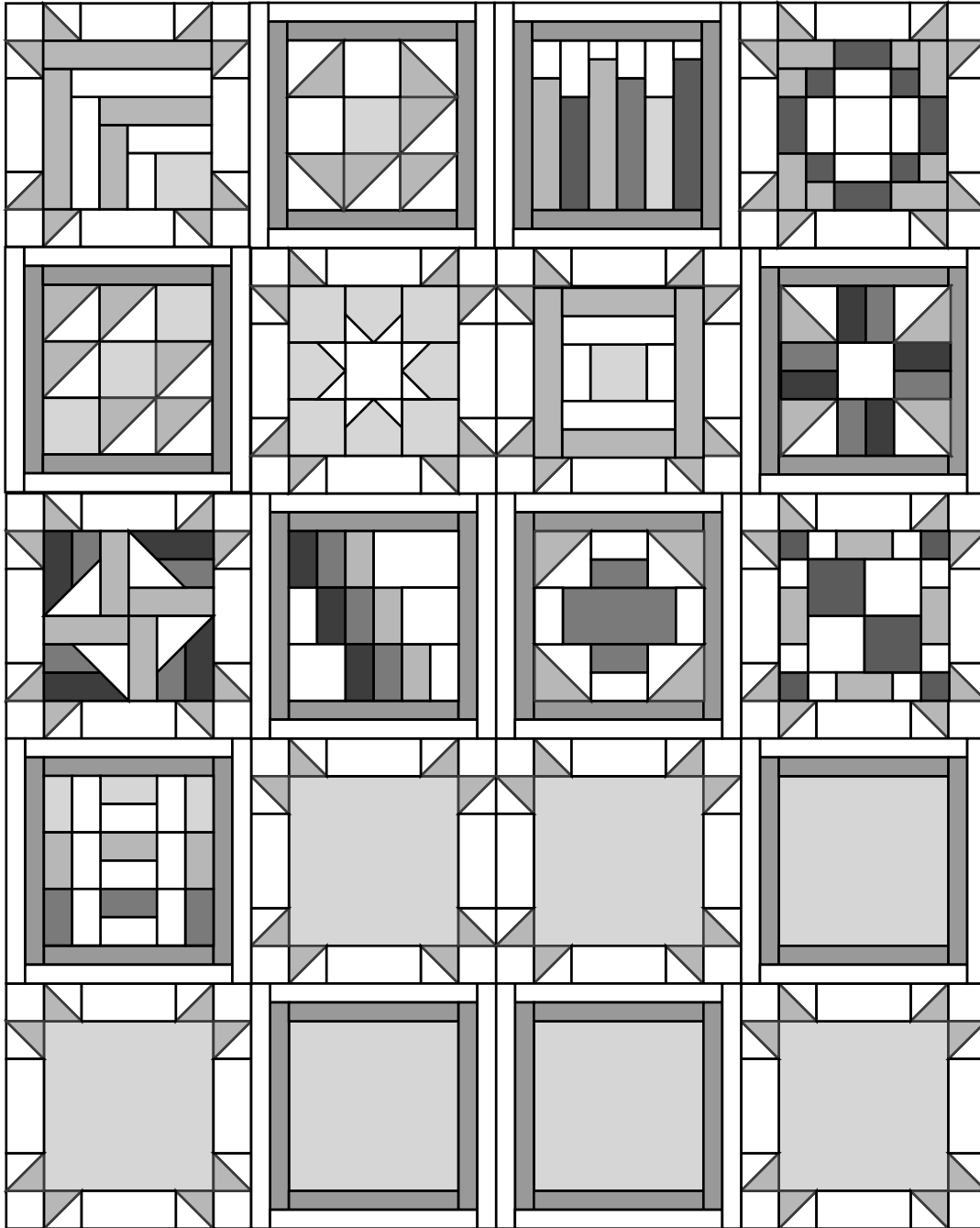
Square the Block to 13.5" x 13.5"

IN the Quilt it is finished size 13" x 13"

I Love to Make Quilts.com

A site for Passionate Quilters

Hosted by Pat Sloan

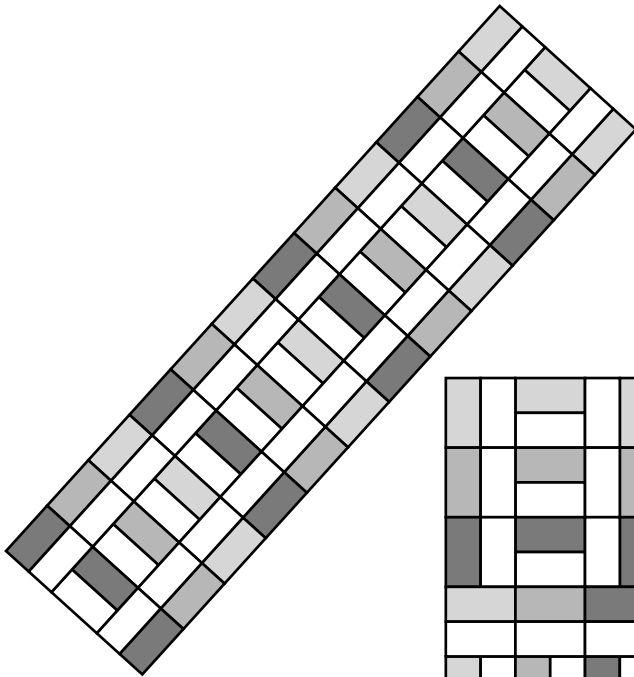


52" x 65"

Pat Sloan the voice of quilting™
www.patsloan.com

Website PatSloan.com - Articles & Tutorials blog.PatSloan.com
Online Community [Facebook.com/PatSloanQuiltFun](https://www.facebook.com/PatSloanQuiltFun)

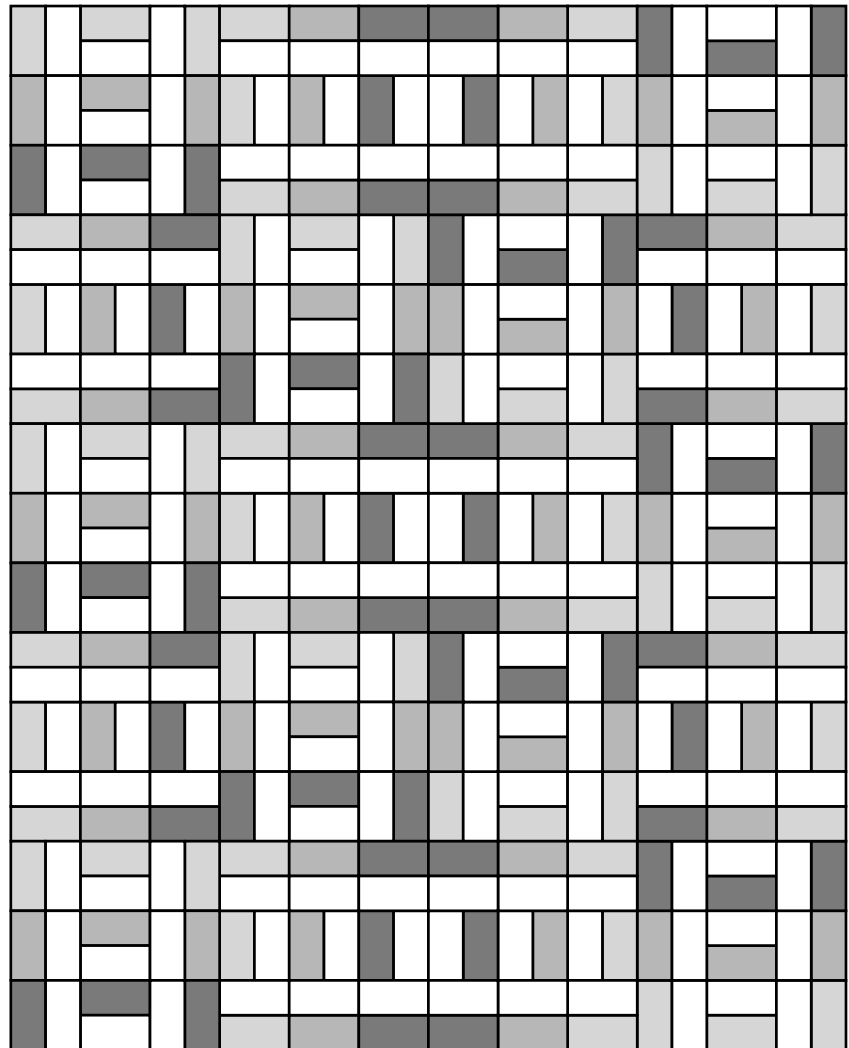
(Page - 4)



9" x 36"
4 block runner

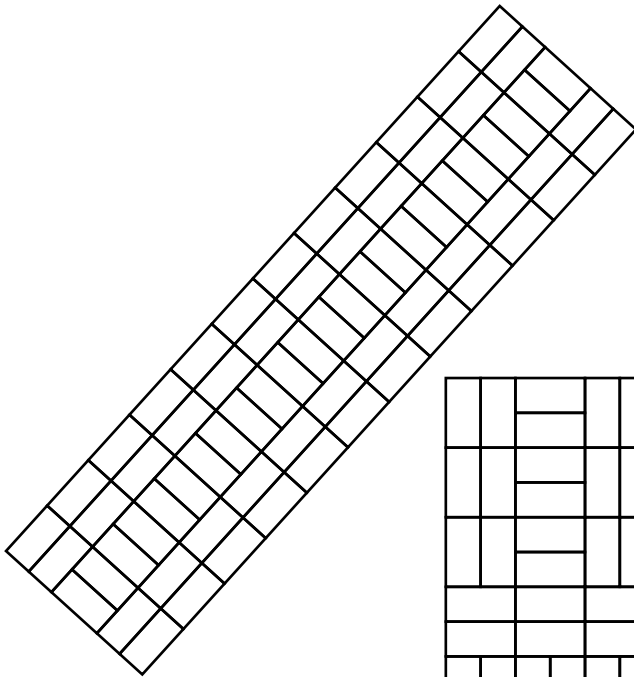
**Have fun
Experimenting
With this
Block!**

36" x 45"
20 blocks
Lap quilt

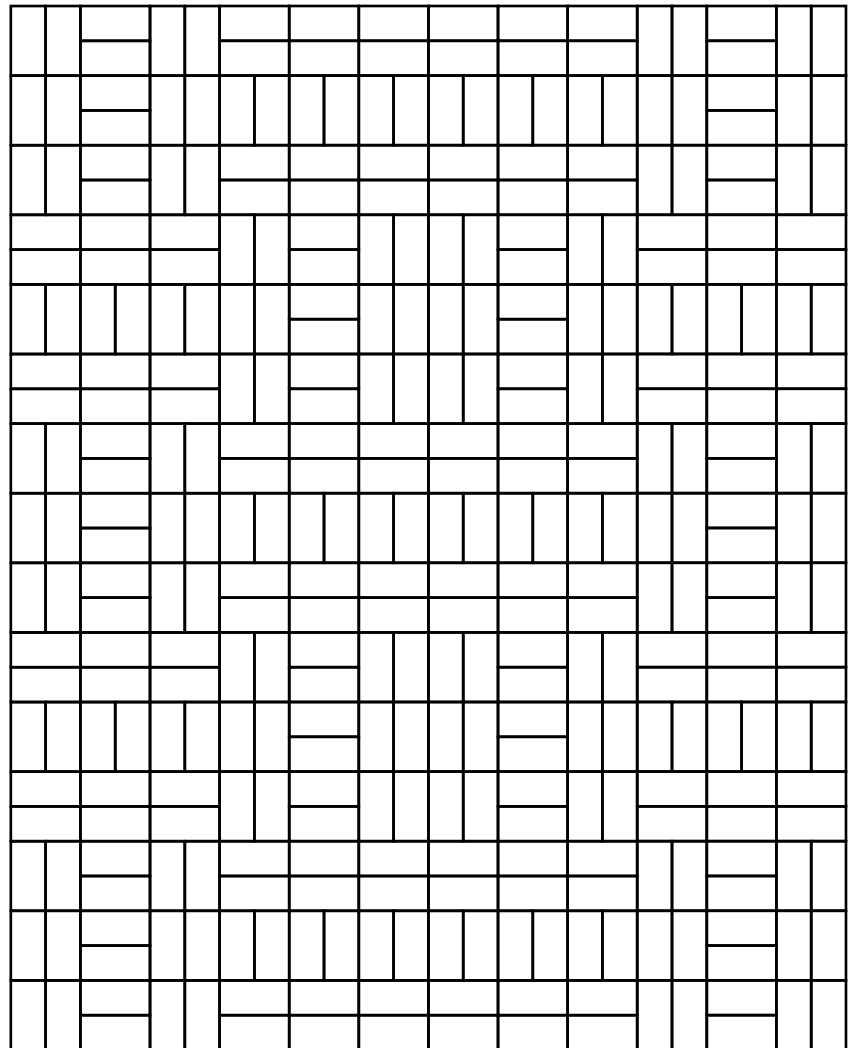


I Love to Make Quilts.com

A site for Passionate Quilters
Hosted by Pat Sloan



Bonus!
A Design page to color
for fabric placement



Pat Sloan the voice of quilting™
www.patsloan.com

Website PatSloan.com - Articles & Tutorials blog.PatSloan.com
Online Community [Facebook.com/PatSloanQuiltFun](https://www.facebook.com/PatSloanQuiltFun)

(Page -6)