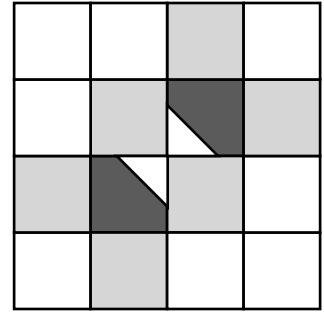


'Home Is.'

Block 16 – Hidden Treasures

Hosted by Pat Sloan At llovetomakequilts.com



Block is 12.5" x 12.5"

Finished size 12" x 12"

Sometimes going in the garage feels like a treasure hunt. You go looking for one thing and find 10 other things along the way. They are also the place that treasures from long ago are stored. One year when in my grandparents garage I found this big box of skeleton keys. My pop-pop had them from a long ago job he worked.

In our family we keep both cars in the garage, it's so nice to be able to get in a warm car in the winter!

Is your garage attached? Detached? A Carport? Or maybe you don't have a garage right now but you did in the past. Today celebrate your garage!

Enter your email for my notice of each new block release & join my online group to share with everyone!

Cutting Directions

Light fabric

- Cut 8 squares 3.5" x 3.5"
- Cut 2 squares 2.5" x 2.5"

Medium fabric

- Cut 6 square 3.5" x 3.5"

Dark fabric

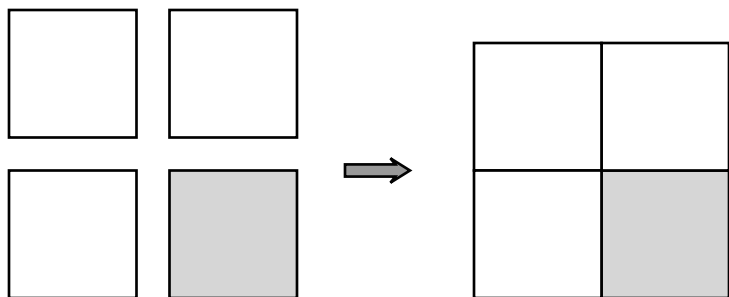
- Cut 2 squares 3.5" x 3.5"

Directions

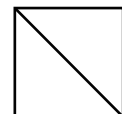
1) Following the diagram sew 3 light 3.5" x 3.5" squares and 1 medium 3.5" x 3.5" square together

Measures 6.5" x 6.5"

Make 2 units



2) Draw a diagonal line on the back of both 'light 2.5" squares



Pat Sloan the voice of quilting™
www.patsloan.com

I hope you enjoy making this quilt. These instructions may not be reproduced by any mechanical or electronic means, including photocopying. Making copies for any purpose other than your own personal use is a violation of copyright laws. ©2020 Pat Sloan & Co. LLC, All rights reserved.

I Love to Make Quilts.com

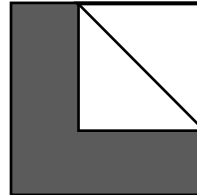
A site for Passionate Quilters
Hosted by Pat Sloan

Directions

3) Following the diagram, Place a 2.5" light square on a corner of a dark 3.5" x 3.5" square. Sew ON the line.

Make 2

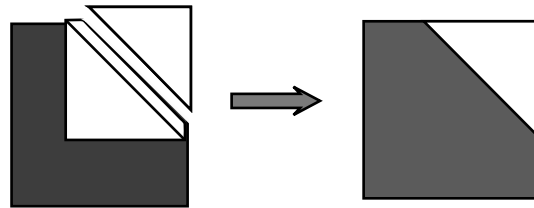
Measures 3.5" x 3.5"



4) Following the diagram trim away leaving a 1/4" seam allowance on the corner
 Press triangles open to create unit

Make 2

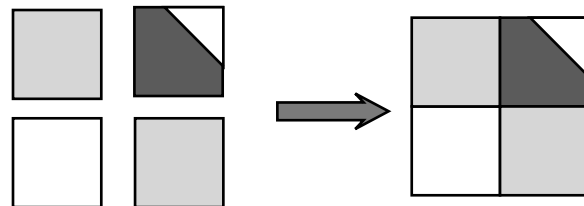
Measures 3.5" x 3.5"



5) Following the diagram sew 1 light 3.5" x 3.5" square, 2 medium 3.5" x 3.5" squares and a unit from step #4 together

Measures 6.5" x 6.5"

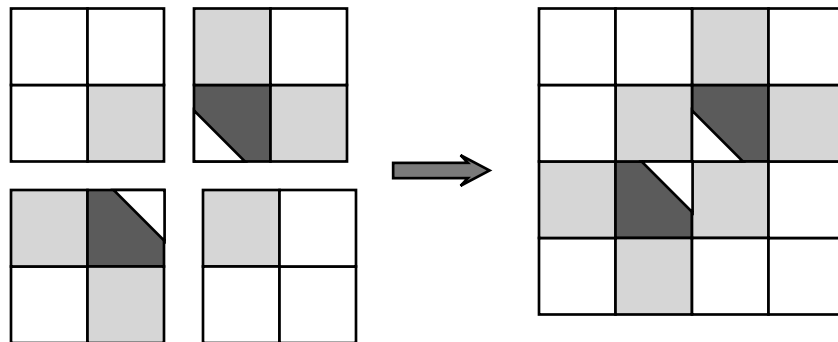
Make 2 units



6) Following the diagram sew the units from Step #1 and #4 together

Make 1

Measures 12.5" x 12.5"

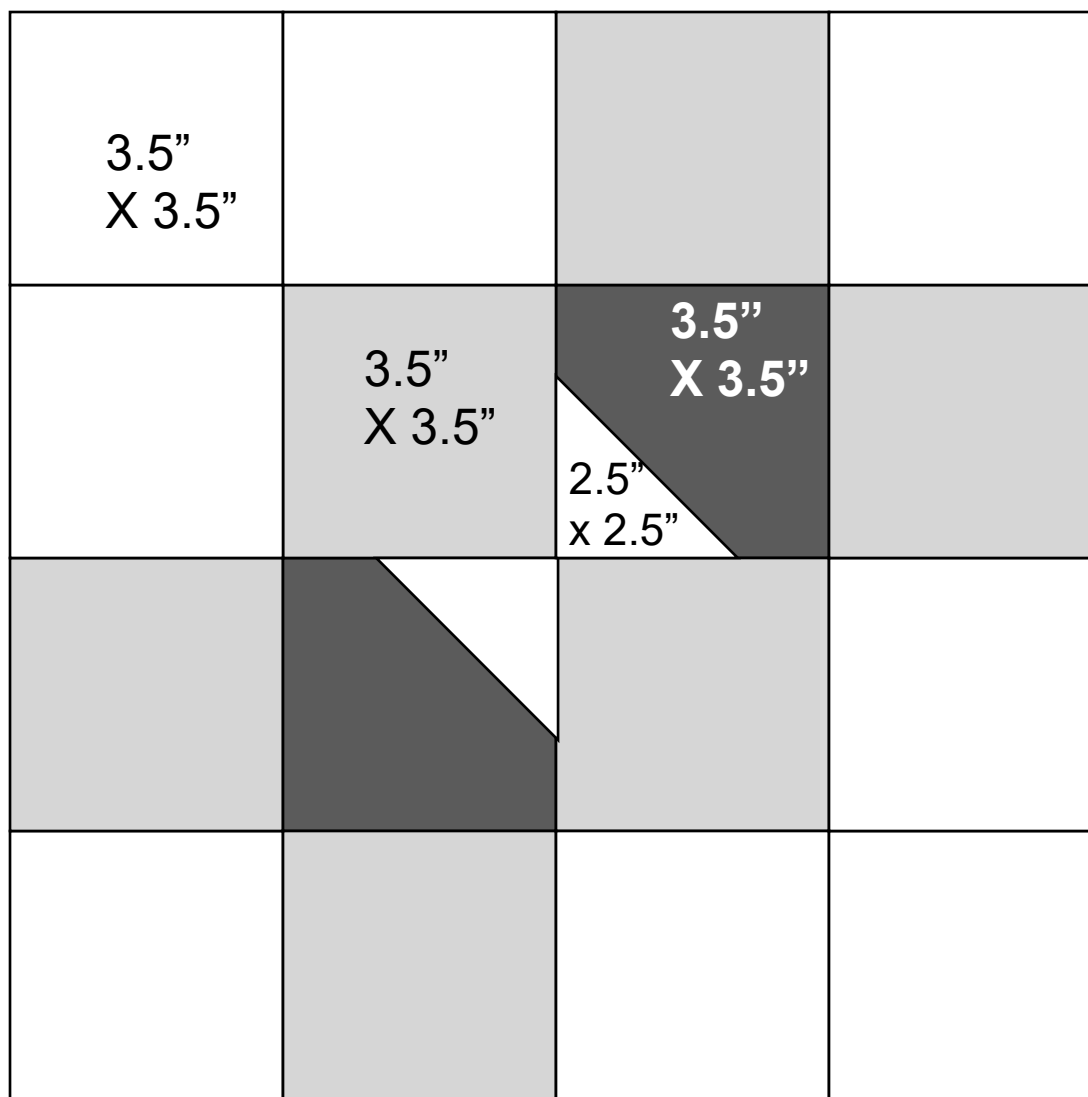


Block 16 – Hidden Treasures

I hope you enjoy making this quilt. These instructions may not be reproduced by any mechanical or electronic means, including photocopying. Making copies for any purpose other than your own personal use is a violation of copyright laws. ©2020 Pat Sloan & Co. LLC, All rights reserved.

Unfinished / CUTTING Sizes

See directions for more details



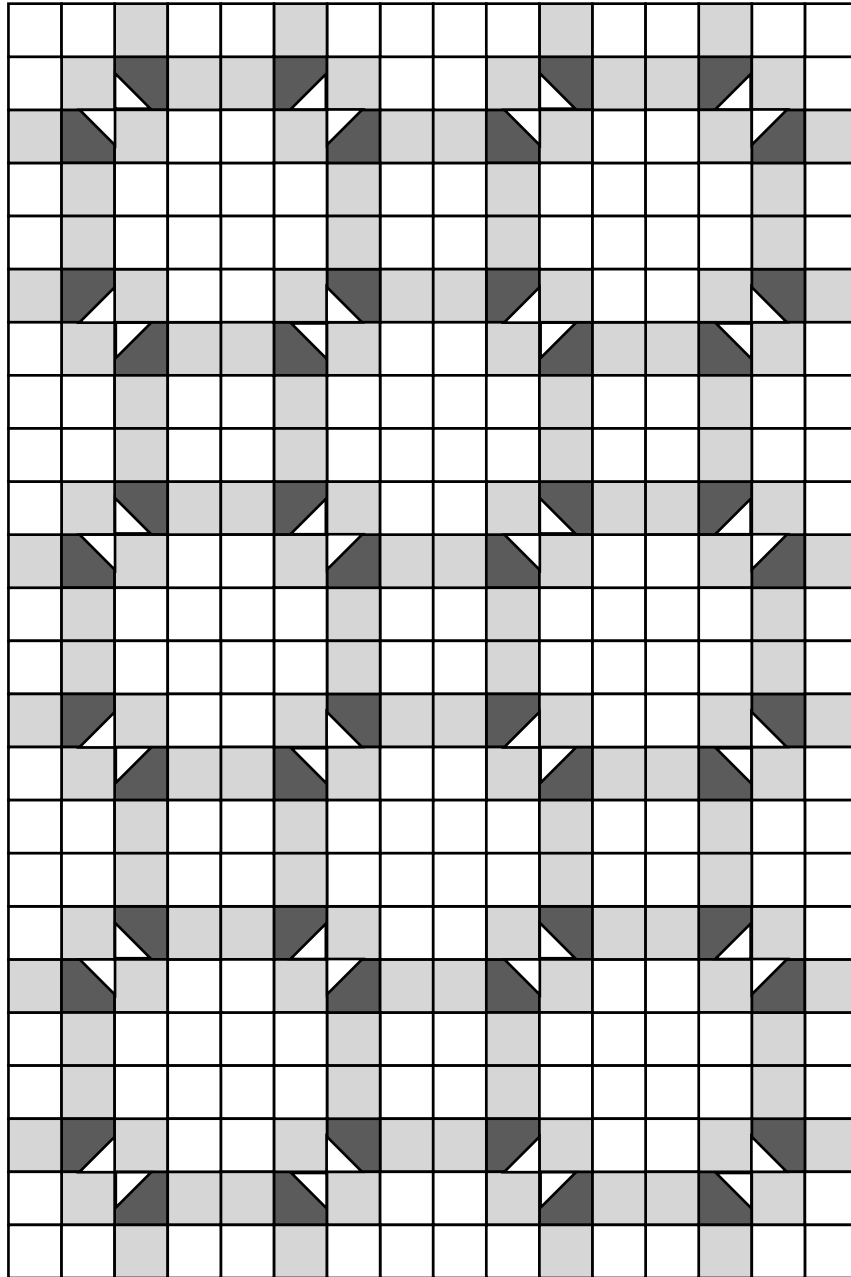
Block is 12.5" x 12.5"

IN the Quilt it is finished size 12" x 12"

Block 16 – Hidden Treasures

I hope you enjoy making this quilt. These instructions may not be reproduced by any mechanical or electronic means, including photocopying. Making copies for any purpose other than your own personal use is a violation of copyright laws. ©2020 Pat Sloan & Co. LLC, All rights reserved.

BONUS Project

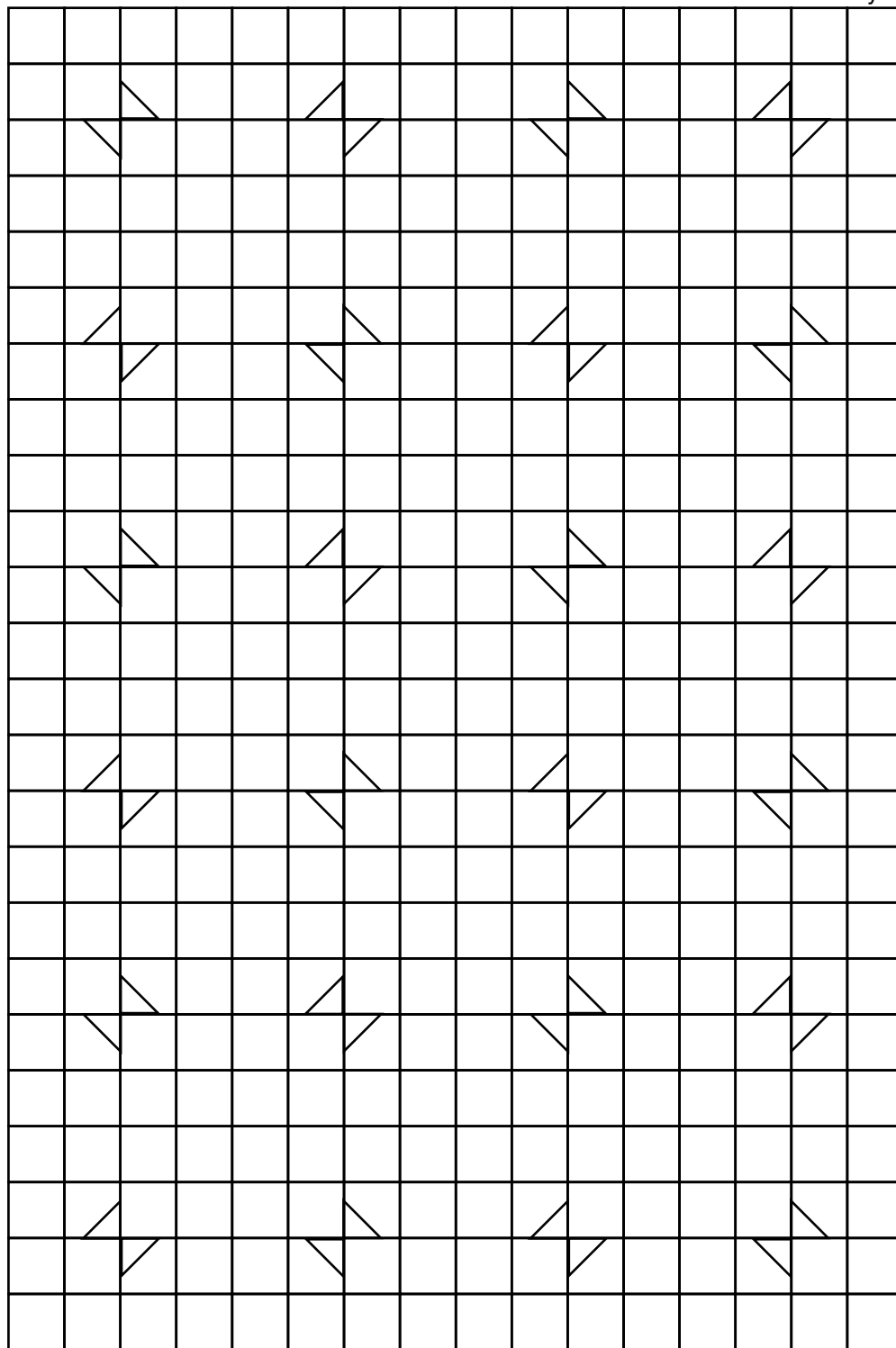


48.5" x 72.5" - 24 Blocks

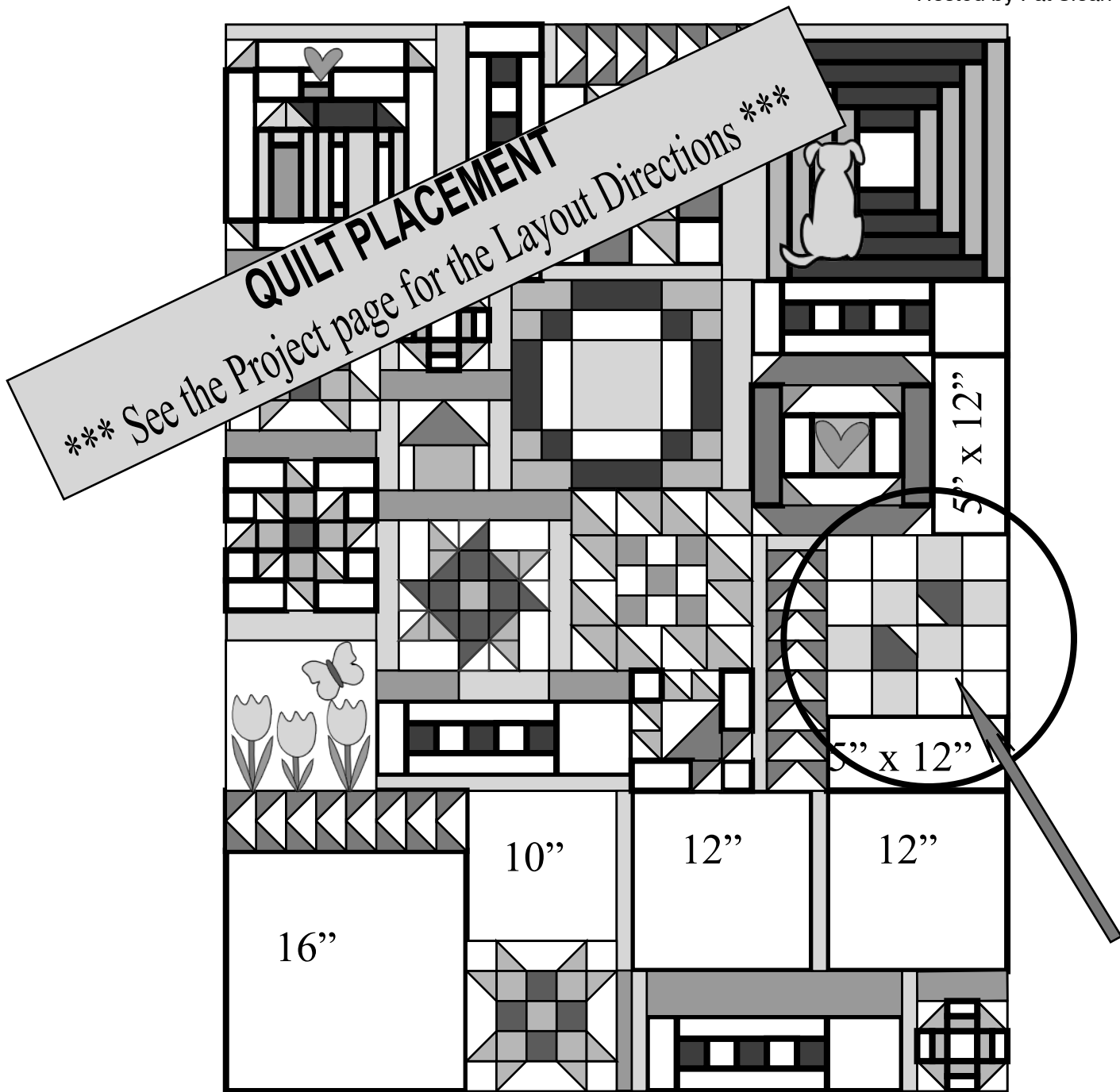
Block 16 – Hidden Treasures

I hope you enjoy making this quilt. These instructions may not be reproduced by any mechanical or electronic means, including photocopying. Making copies for any purpose other than your own personal use is a violation of copyright laws. ©2020 Pat Sloan & Co. LLC, All rights reserved.

BONUS Project Coloring Page
Block 16 – Hidden Treasures



I hope you enjoy making this quilt. These instructions may not be reproduced by any mechanical or electronic means, including photocopying. Making copies for any purpose other than your own personal use is a violation of copyright laws. ©2020 Pat Sloan & Co. LLC, All rights reserved.



QUILT PLACEMENT

*** See the Project page for the Layout Directions ***

I hope you enjoy making this quilt. These instructions may not be reproduced by any mechanical or electronic means, including photocopying. Making copies for any purpose other than your own personal use is a violation of copyright laws. ©2020 Pat Sloan & Co. LLC, All rights reserved.

Pat Sloan the voice of quilting™
 www.patsloan.com