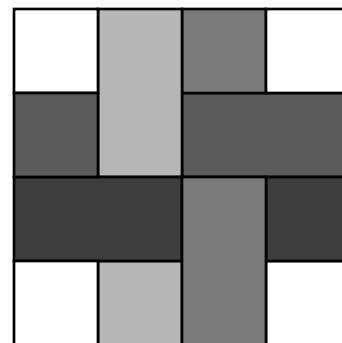


A Flower Bouquet

Block 19/20 – Master Gardener

Hosted by Pat Sloan At Ilovetomakequilts.com

Years ago I heard the term 'Master Gardener'. I wondered what that meant? The over all definition is 'Volunteer programs that train individuals in the science and art of gardening. These individuals pass on the information they learned during their training, as volunteers who advise and educate the public on gardening and horticulture'



Blocks are 12.5" x 12.5"
Finished size 12" x 12"

From Wiki I learned that the first Master Gardener program was founded in 1973 by Dr. David Gibby of Washington State University Cooperative Extension. It was developed to meet a high demand for urban horticulture and gardening advice. The first trial clinic was held at the Tacoma Mall in 1972. Wouldn't it be fun to know someone that went to the very first one?

The best time to plant a tree was 20 years ago. The second-best time is now. – **Unknown**

Enter your email for my notice of each new block release & join my online group to share with everyone!

Ruler Cutting Only

Corner fabric

- Cut 4 squares 3.5" x 3.5"

Medium fabric #1

- Cut 1 square 3.5" x 3.5"
-Cut 1 rectangle 3.5" x 6.5"

Medium fabric #2

- Cut 1 square 3.5" x 3.5"
-Cut 1 rectangle 3.5" x 6.5"

Dark fabric #1

- Cut 1 square 3.5" x 3.5"
-Cut 1 rectangle 3.5" x 6.5"

Dark fabric #2

- Cut 1 square 3.5" x 3.5"
-Cut 1 rectangle 3.5" x 6.5"

Gemini Die Cutting

Corner fabric

- Cut 4 squares 3.5" x 3.5"

Medium fabric #1

- Cut 1 square 3.5" x 3.5"

Medium fabric #2

- Cut 1 square 3.5" x 3.5"

Dark fabric #1

- Cut 1 square 3.5" x 3.5"

Dark fabric #2

- Cut 1 square 3.5" x 3.5"

Ruler Cutting for this block

Medium fabric #1

-Cut 1 rectangle 3.5" x 6.5"

Medium fabric #2

-Cut 1 rectangle 3.5" x 6.5"

Dark fabric #1

-Cut 1 rectangle 3.5" x 6.5"

Dark fabric #2

-Cut 1 rectangle 3.5" x 6.5"

I Love to Make Quilts.com

I Love to Make Quilts.com

A site for Passionate Quilters

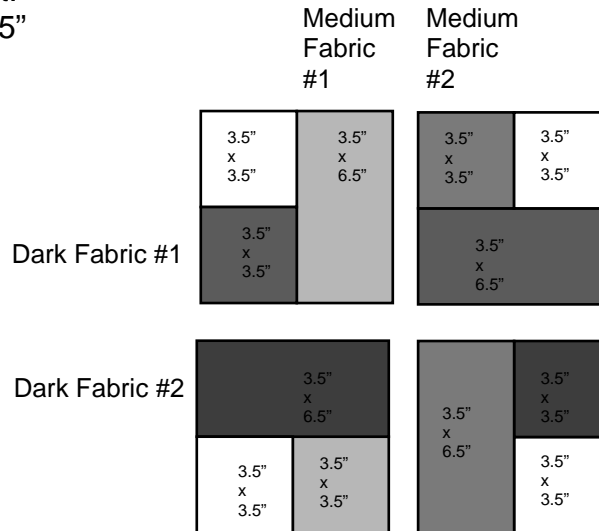
Hosted by Pat Sloan

Directions

1) Lay out your blocks placing the corner fabric on the 4 corners.
Following the diagram place the Medium #1 & #2 and the Dark #1 & #2 in position.
Sew each quadrant.

Measures 6.5" x 6.5"

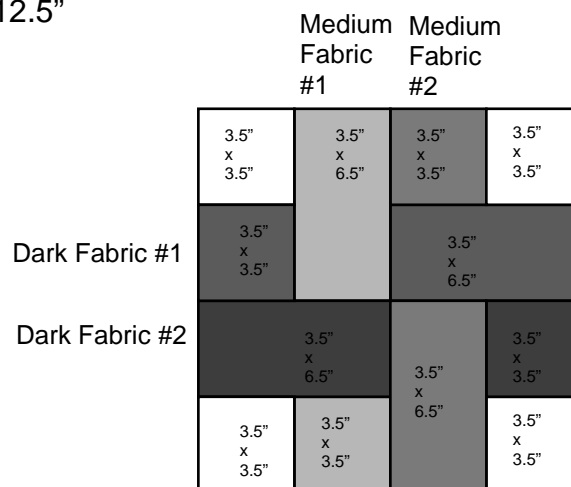
Make 4



2) Sew the quadrants together

Measures 12.5" x 12.5"

Make 1



Unfinished / CUTTING Sizes

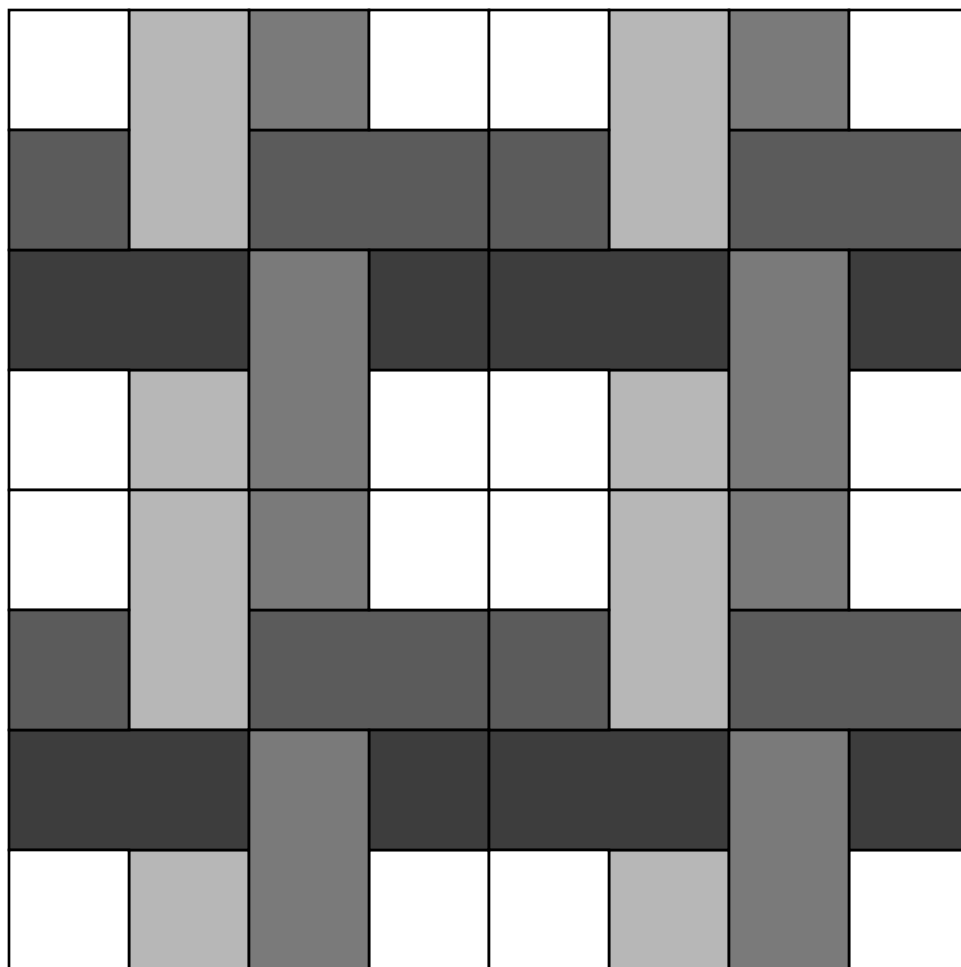
See directions for more details

3.5" X 3.5"	3.5" X 6.5"	3.5" X 3.5"	3.5" X 3.5"
3.5" X 3.5"		3.5" X 6.5"	
3.5" X 6.5"		3.5" X 6.5"	3.5" X 3.5"
3.5" X 3.5"	3.5" X 3.5"		3.5" X 3.5"

Block is 12.5" x 12.5"

IN the Quilt it is finished size 12" x 12"

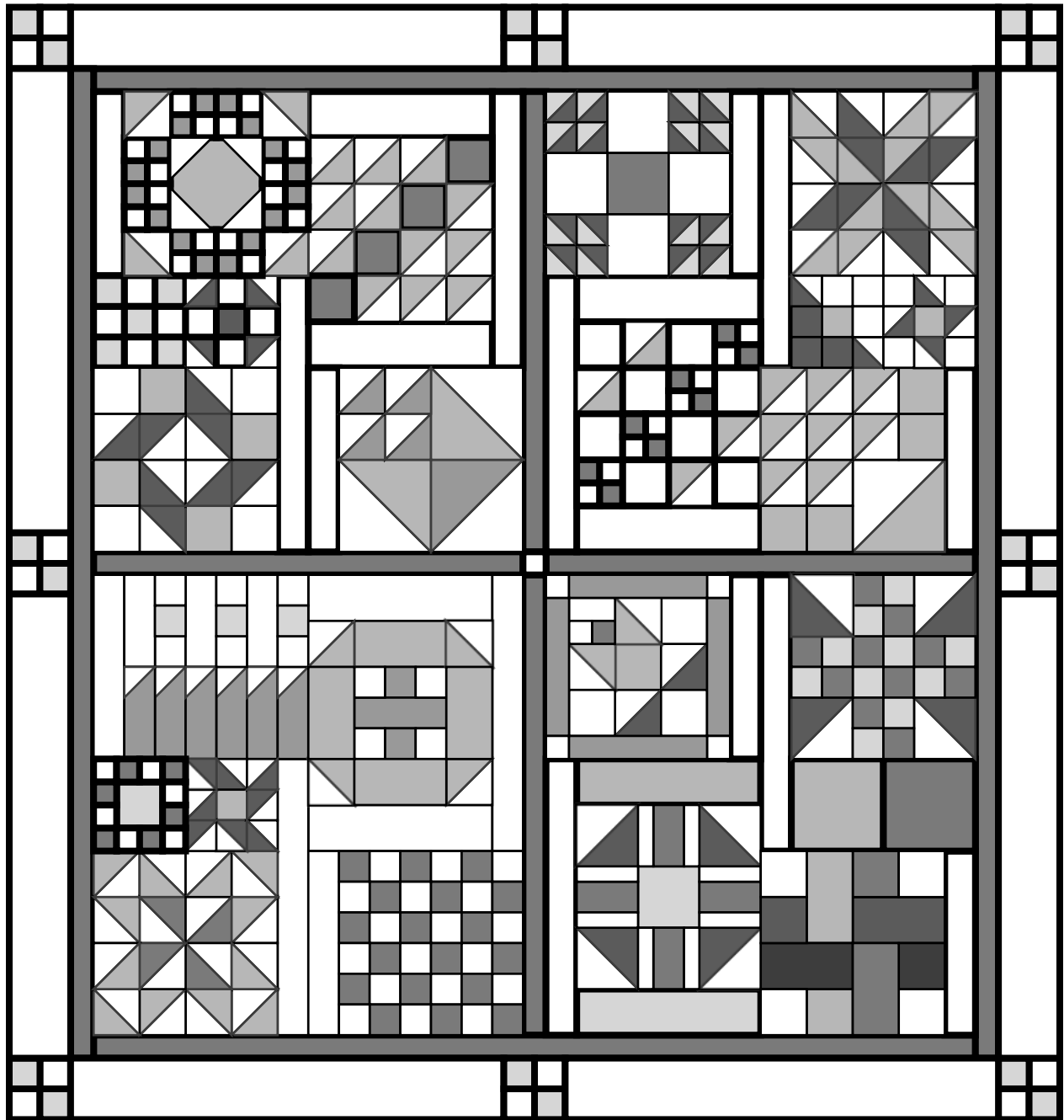
A Flower Bouquet



24.5" x 24.5"

4 blocks

For a cute table topper



A Flower Bouquet

Block placement

See project page for layout directions