

Block 20/25

Hugs & Kisses

One Hundred Eighty-Two Day Solstice Challenge
Hosted by Pat Sloan At Ilovetomakequilts.com

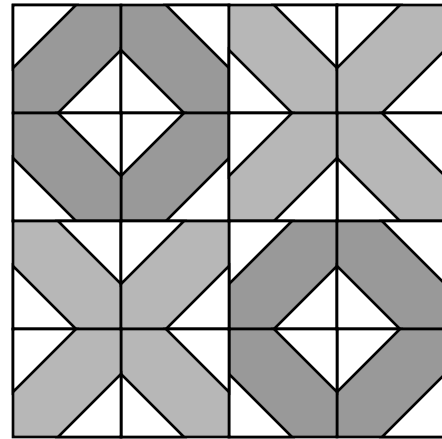
Ever since I can remember I've put xoxo or xxxo at the end of my letters to family. Maybe it had to do with living so far away and the only way to be sure they knew I loved them was to send them little kisses & hugs in my hand written letters.

I've also appliued them to many of my quilts and decided it was time to do a pieced version for my Solstice! This block goes by other names, so you might have seen it called 'Road to Tennessee'.

The other cool part about this block is that you can really change the look with color and fabric placement. I put a coloring page at the end!

The Solstice challenge spans 182 days between the winter and summer Solstice this year. We'll be making a quilt with 25 blocks... and Somewhere along this journey I'll give you a setting.

Enter your email to get the notice of each new block, and join my online group to can share with everyone!



SQUARE Block to 12.5" x 12.5"
Finished in the quilt is Size 12"

Cutting & Sewing

TIP - Try starching your fabric before Cutting for this block

Light Fabric

- Cut 32 squares 2" x 2"

Medium Fabric

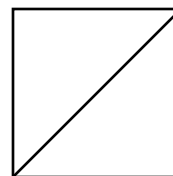
- Cut 8 squares 3.5" x 3.5"

Dark Fabric

- Cut 8 squares 3.5" x 3.5"

Directions

- 1) Draw a line corner to corner on the back Of all the light 2" squares



Pat Sloan the voice of quilting™
www.patsloan.com

I Love to Make Quilts.com

A site for Passionate Quilters
Hosted by Pat Sloan

Website PatSloan.com - Articles & Tutorials blog.PatSloan.com
Online Community [Facebook.com/PatSloanQuiltFun](https://www.facebook.com/PatSloanQuiltFun)

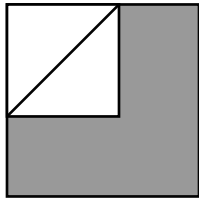
I Love to Make Quilts.com

A site for Passionate Quilters

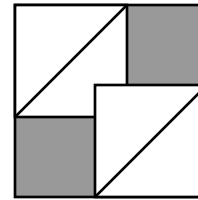
Hosted by Pat Sloan

Directions

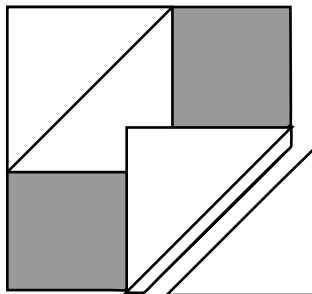
2) Following the diagram Place the light square on the Medium square, Right sides together Sew ON the line.
Make 8 Medium Fabric
Make 8 Dark Fabric
Measures 3.5" x 3.5"



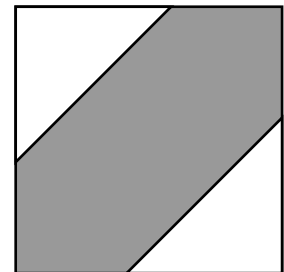
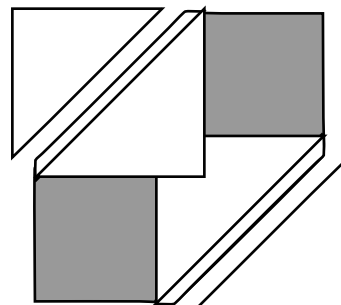
3) Following the diagram Place another light square on the Medium square, Right sides together Sew ON the line.
Make 8 Medium Fabric
Make 8 Dark Fabric
Measures 3.5" x 3.5"



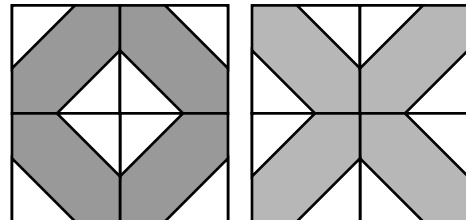
4) Following the diagram trim away Leaving a 1/4" seam allowance.
Trim 8 Medium Fabric
Trim 8 Dark Fabric
Measures 3.5" x 3.5"



5) Following the diagram trim away The other side Leaving a 1/4" seam allowance.
Trim 8 Medium Fabric
Trim 8 Dark Fabric
Press triangles open to make a square
Measures 3.5" x 3.5"



**Block Layout
On Following Page
When you put 4
Together the
X or O block size
Is 6.5" x 6.5"**

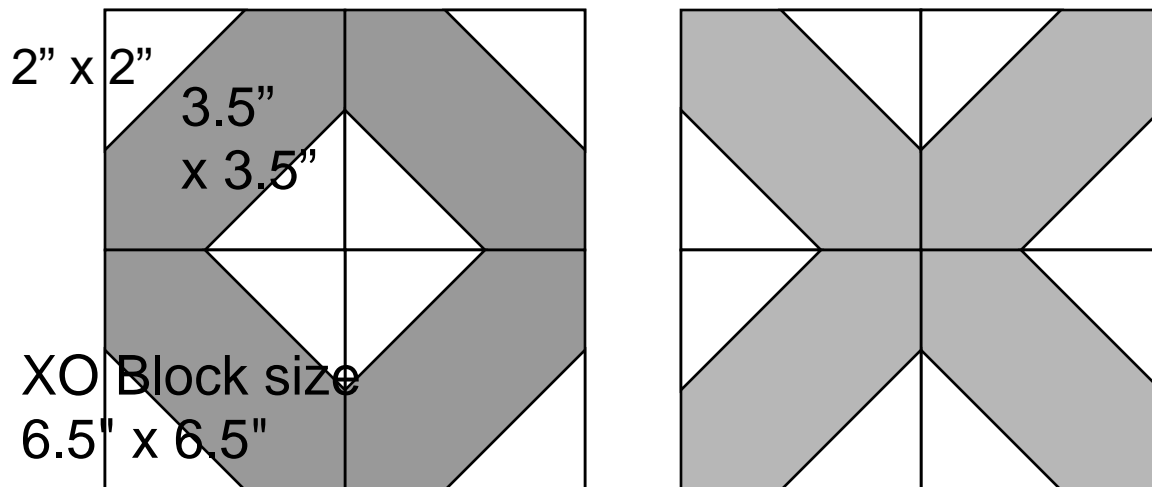


Pat Sloan the voice of quilting™
www.patsloan.com

Cutting Sizes

NOTE-

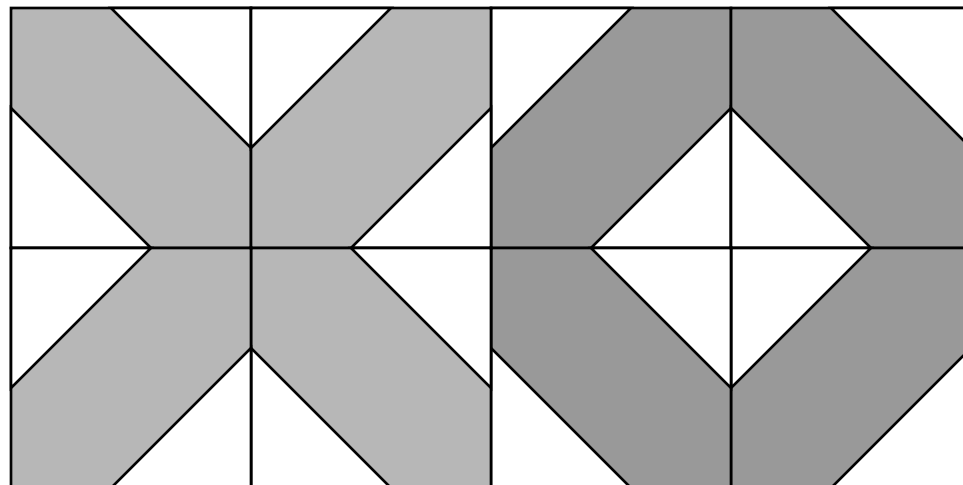
X & O squares are cut 3.5" x 3.5" — Background Sew & flip corners 2" x 2"



2" x 2"

3.5"
x 3.5"

XO Block size
6.5" x 6.5"



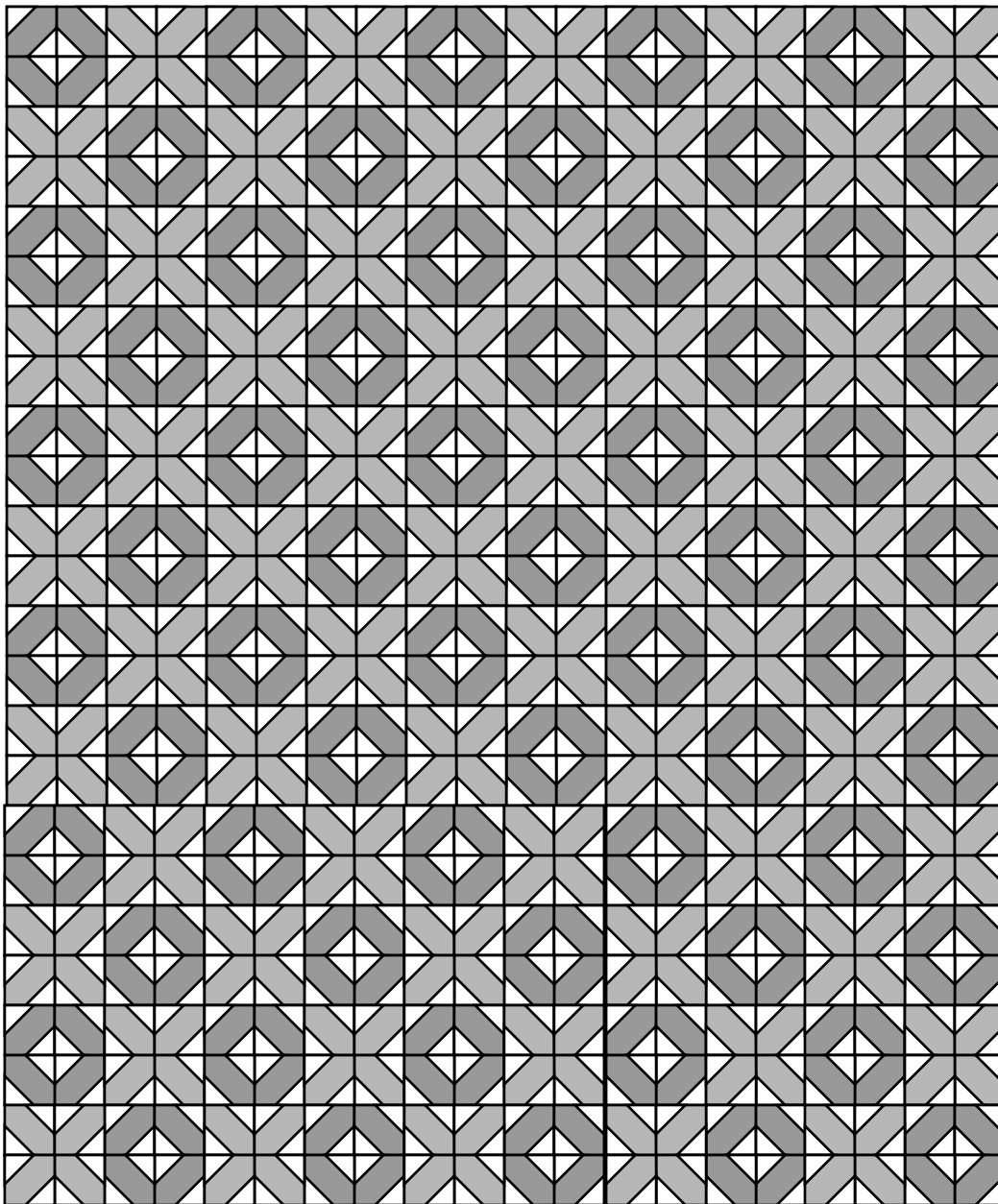
Square the Block to 12.5" x 12.5"

IN the Quilt it is finished size 12" x 12"

I Love to Make Quilts.com

A site for Passionate Quilters

Hosted by Pat Sloan



60" x 72"

Make 30 blocks

Pat Sloan the voice of quilting™

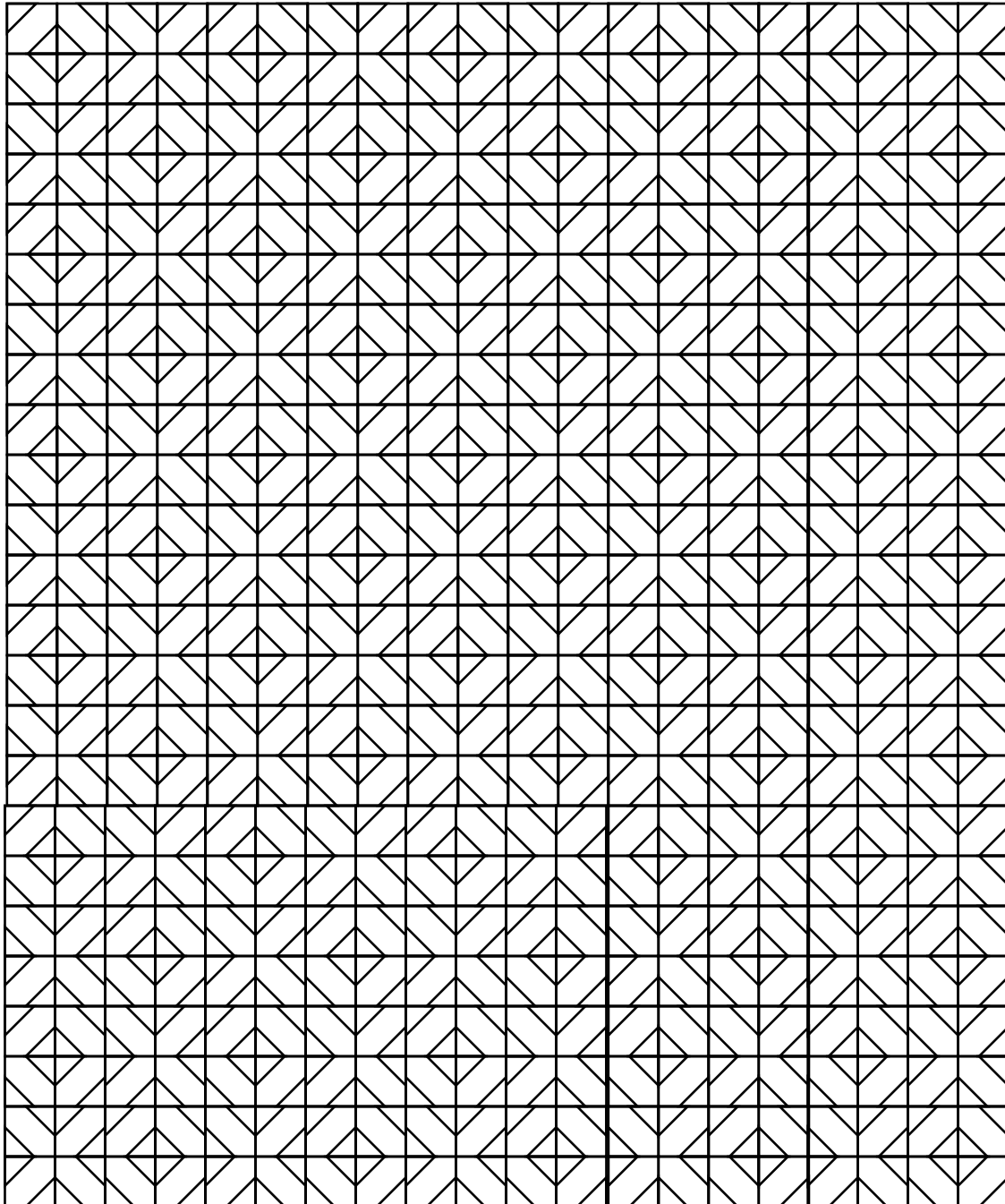
www.patsloan.com

(Page - 4)

I Love to Make Quilts.com

A site for Passionate Quilters

Hosted by Pat Sloan



Have fun with my Coloring page for designing!

Pat Sloan the voice of quilting™

Website PatSloan.com - Articles & Tutorials blog.PatSloan.com
Online Community [Facebook.com/PatSloanQuiltFun](https://www.facebook.com/PatSloanQuiltFun)

www.patsloan.com (Page - 5)