

# Main Street

## Block 4/12 – Courthouse

Hosted by Pat Sloan At [Ilovetomakequilts.com](http://Ilovetomakequilts.com)

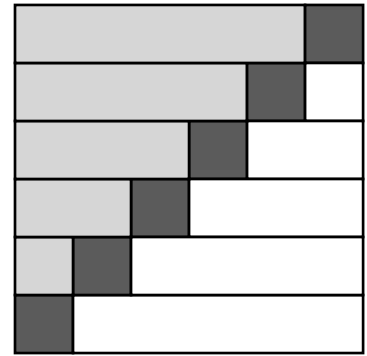
The courthouse is often at the center of town. The middle of Main street or on the town square. They can be quite grand in some towns. And very modest buildings in others.

I have two fabulous memories of the Courthouse. First is that is where we signed papers so that we could be married.

And the other is a wonderful photo of my mother-in-law doing fashion model poses on the steps one Sunday. She and a friend took pictures of each other. She worked and lived downtown at the time.

What is your courthouse like? Show me a photo!

Enter your email for my notice of each new block release & join my online group to share with everyone!



**Block is 12.5" x 12.5"**

Finished size 12" x 12"

## Cutting Directions

### Light fabrics

- Cut 1 rectangle 2.5" x 10.5"
- Cut 1 rectangle 2.5" x 8.5"
- Cut 1 rectangle 2.5" x 6.5"
- Cut 1 rectangle 2.5" x 4.5"
- Cut 1 square 2.5" x 2.5"

### Medium fabrics

- Cut 1 rectangle 2.5" x 10.5"
- Cut 1 rectangle 2.5" x 8.5"
- Cut 1 rectangle 2.5" x 6.5"
- Cut 1 rectangle 2.5" x 4.5"
- Cut 1 square 2.5" x 2.5"

### Dark Fabric

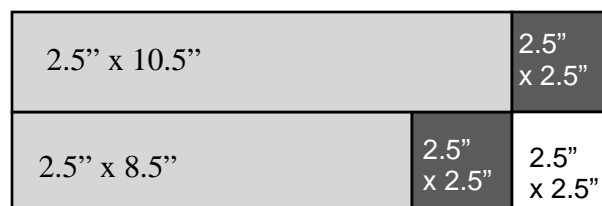
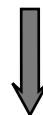
- Cut 6 squares 2.5" x 2.5"

## Directions

1) Following the diagram sew first 2 rows Together.

Measures 4.5" x 12.5"

Make 1 unit



*Pat Sloan* the voice of quilting™  
www.patsloan.com

*I Love to Make Quilts.com*

A site for Passionate Quilters  
Hosted by Pat Sloan

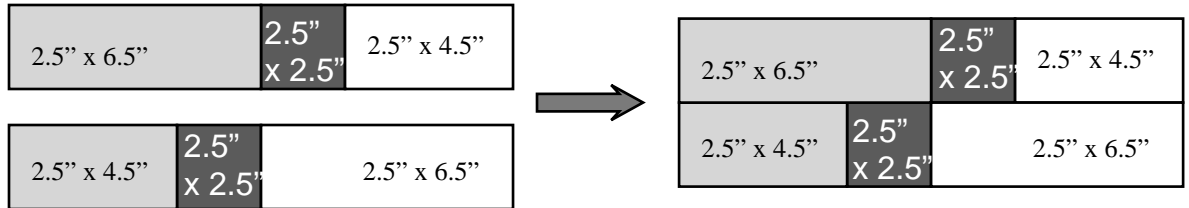
Website [PatSloan.com](http://PatSloan.com) - Articles & Tutorials [blog.PatSloan.com](http://blog.PatSloan.com)  
Online Community [Facebook.com/PatSloanQuiltFun](https://www.facebook.com/PatSloanQuiltFun)

**Directions**

2) Following the diagram sew first 3rd & 4th rows Together.

Measures 4.5" x 12.5"

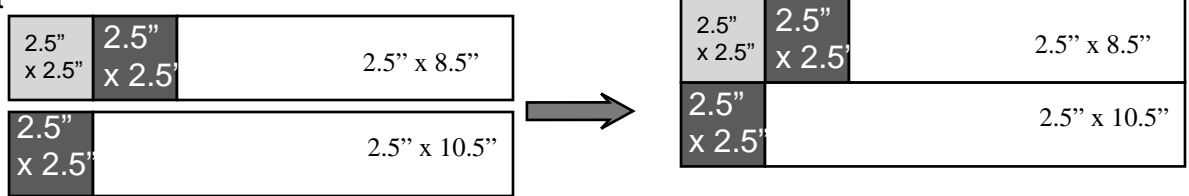
Make 1 unit



3) Following the diagram sew first 5th & 6th rows Together.

Measures 4.5" x 12.5"

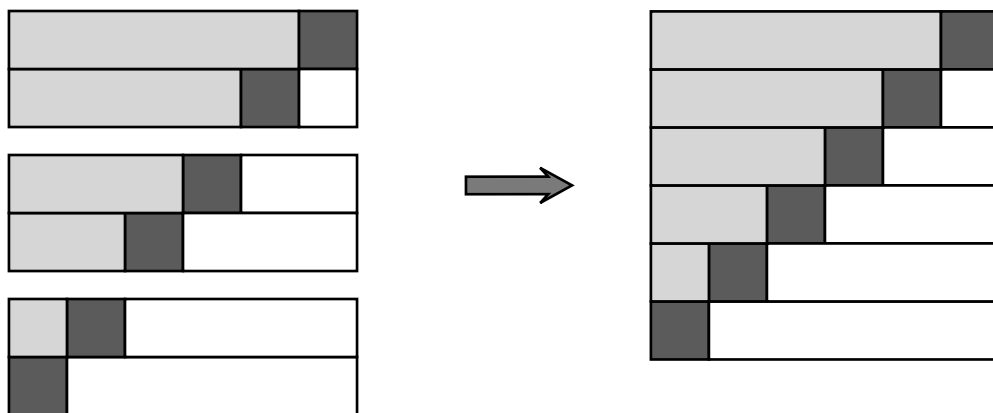
Make 1 unit



5) Following the diagram, Assemble the block

Make 1

Measures 12.5" x 12.5"



## Unfinished / CUTTING Sizes

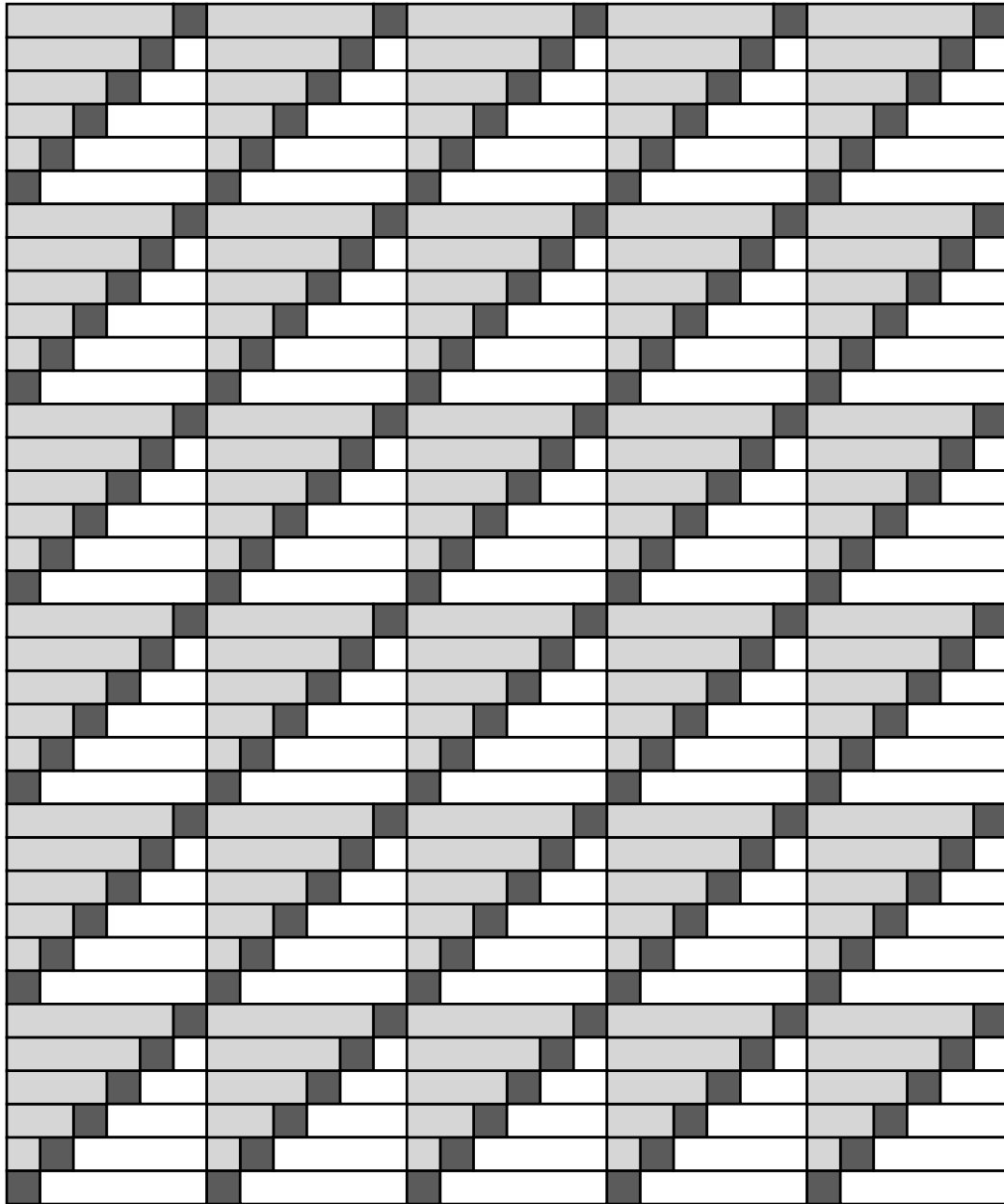
See directions for more details

2.5" x 10.5"		2.5" x 2.5"
2.5" x 8.5"		2.5" x 2.5"
2.5" x 6.5"		2.5" x 4.5"
2.5" x 4.5"		2.5" x 6.5"
2.5" x 2.5"		2.5" x 8.5"
		2.5" x 10.5"

**Block is 12.5" x 12.5"**

IN the Quilt it is finished size 12" x 12"

# Main Street



**BONUS PROJECT using  
Block 4/12 – Courthouse  
60.5” x 72.5” - 30 Blocks**

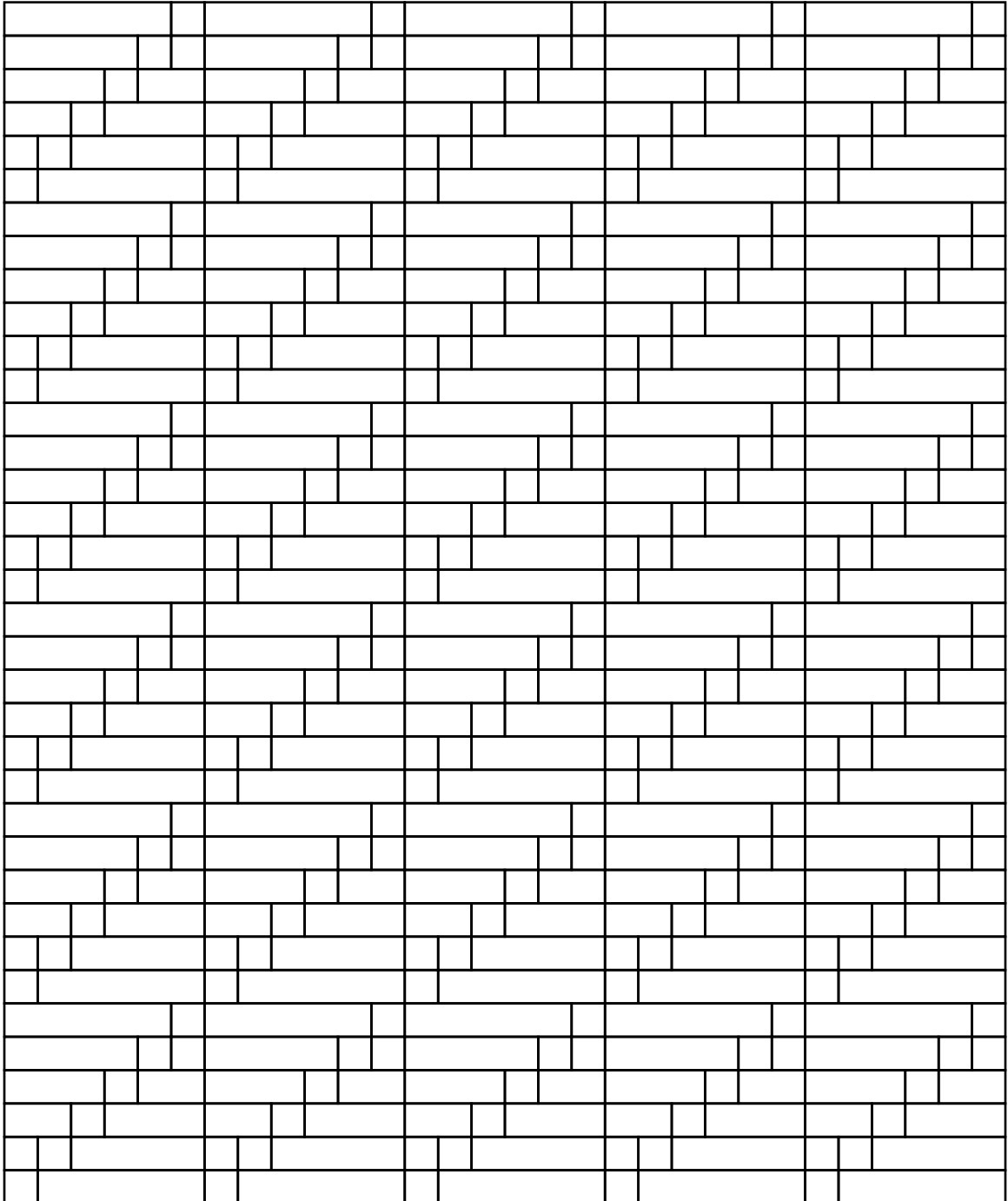
*Pat Sloan* the voice of quilting™

[www.patsloan.com](http://www.patsloan.com)

Website [PatSloan.com](http://PatSloan.com) - Articles & Tutorials [blog.PatSloan.com](http://blog.PatSloan.com)

Online Community [Facebook.com/PatSloanQuiltFun](https://www.facebook.com/PatSloanQuiltFun)

# Main Street



## BONUS PROJECT using Block 4/12 – Courthouse

(Page - 5)