

Block 5/25

Glasses & Cups

Grandma's Kitchen Challenge

Hosted by Pat Sloan At Ilovetomakequilts.com

Each of my grandma's had a certain glass or cup that I remember.

Granny's were these 'mod' aluminum cups. They were in shocking bright colors and we just may have had a tussle or two over who got 'which color' metal cup. My brother has equally strong memories of these cups and we both have one to remember Granny.

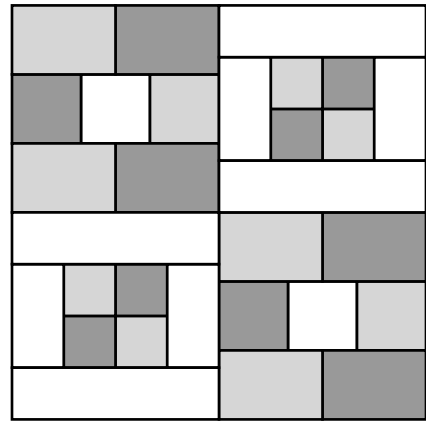
Na-Na, my maternal grandmother, had a totally different set of glasses that I remember. There was a huge rage in advertising that products would have some great 'collectable' images on them, and be useful. This grandma was ALL about the useful and she bought enough jars of jelly to have a full set of juice glasses. Our characters? The Flintstones!

This block reminds me of glasses on a shelf and I suggest you try it with lots of fabrics! A bonus full quilt layout and blank design sheet are at the end

My Grandma's Kitchen challenge runs - June 28, 2017 to Nov 22, 2017.

We will be making a quilt with 25 blocks... and Somewhere along this journey I'll give you a setting.

Enter your email to get the notice of each new block, and join my online group to can share with everyone!



SQUARE Block to 12.5" x 12.5"

Finished in the quilt is Size 12"

Cutting & Sewing

Light Fabric

- Cut 2 squares 2.5" x 2.5"
- Cut 4 strips 2" x 3.5"
- Cut 4 strips 2" x 6.5"

Several or 1 Medium Fabrics - this is total needed

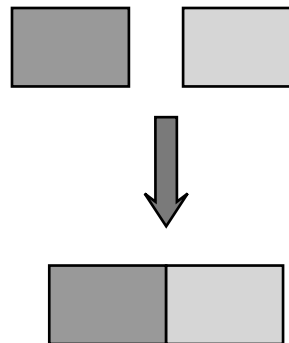
- Cut 2 squares 2.5" x 2.5"
- Cut 4 squares 2" x 2"
- Cut 4 strips 2.5" x 3.5"

Several or 1 Dark Fabrics - this is total needed

- Cut 2 squares 2.5" x 2.5"
- Cut 4 squares 2" x 2"
- Cut 4 strips 2.5" x 3.5"

Directions

- 1) Following the diagram, sew the 2.5" x 3.5" medium and dark strips to each other
Make 4 units - Measures 2.5" x 6.5"



Pat Sloan the voice of quilting™
www.patsloan.com

I Love to Make Quilts.com

A site for Passionate Quilters
Hosted by Pat Sloan

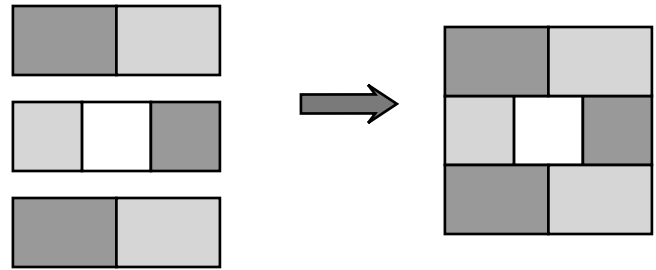
Website PatSloan.com - Articles & Tutorials blog.PatSloan.com
Online Community [Facebook.com/PatSloanQuiltFun](https://www.facebook.com/PatSloanQuiltFun)

Directions

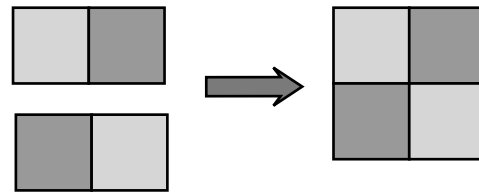
2) Following the diagram sew the medium, light, and dark 2.5" squares together
Make 2 units - Measures 2.5" x 6.5"



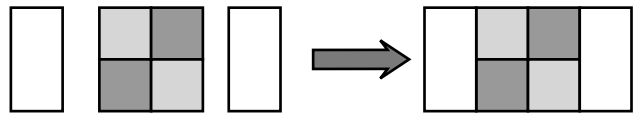
3) Following the diagram sew the block
Make 2 units - Measures 6.5" x 6.5"



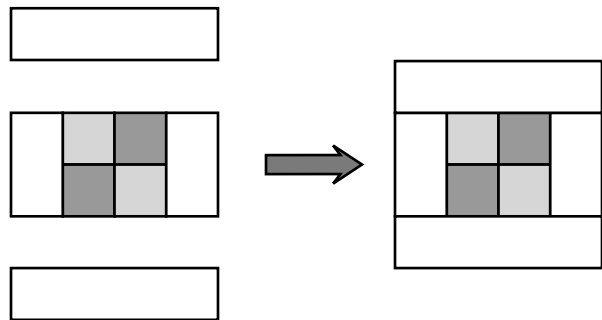
4) Sew the 2" medium and dark squares
To each other following the diagram
Make 2 units - Measures 3.5" x 3.5"



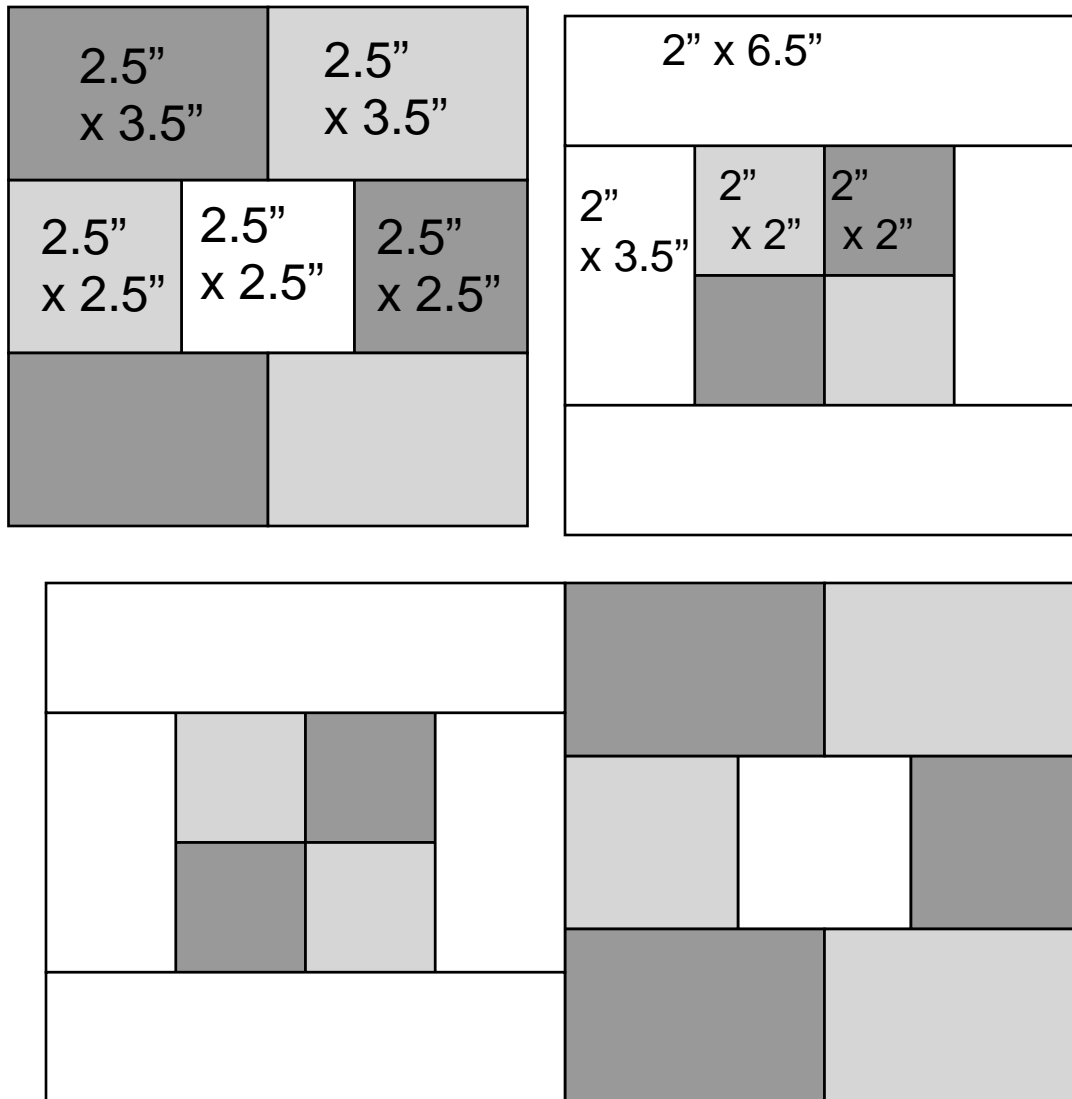
5) Following the diagram sew the short
Light rectangles to each side of the 4patch
Unit . Make 2 Measures 3.5" x 6.5"



6) Following the diagram sew the
Long Light rectangles to the top and
Bottom Make 2 Measures 6.5" x 6.5"



CUTTING Sizes



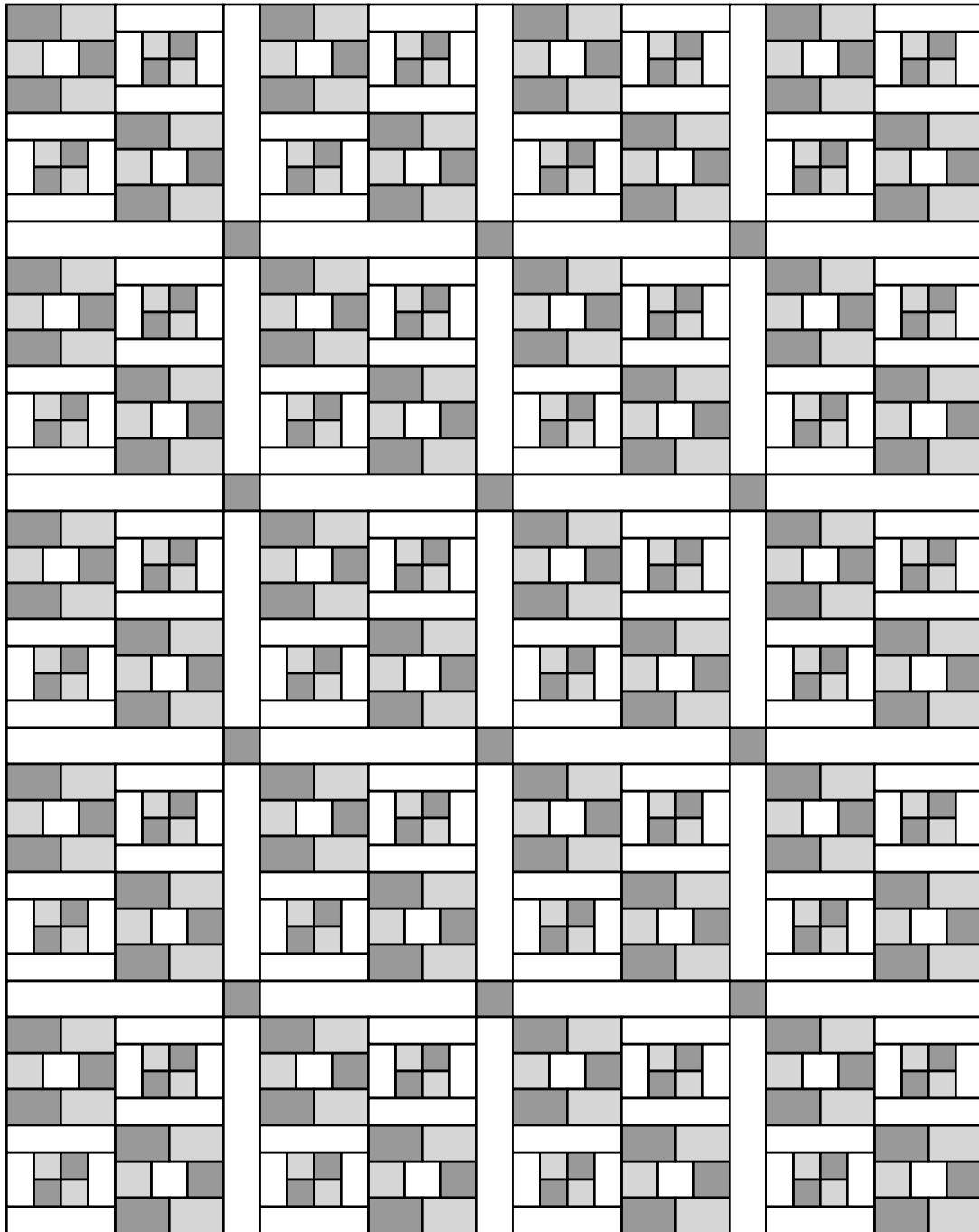
Square the Block to 12.5" x 12.5"

IN the Quilt it is finished size 12" x 12"

I Love to Make Quilts.com

A site for Passionate Quilters

Hosted by Pat Sloan



54" x 68" quilt using 20 blocks

Sashings Cut 31 strips 2.5" x 22.5"

Cut 12 Squares 2.5" x 2.5"

Pat Sloan the voice of quilting™

www.patsloan.com

Website PatSloan.com - Articles & Tutorials blog.PatSloan.com

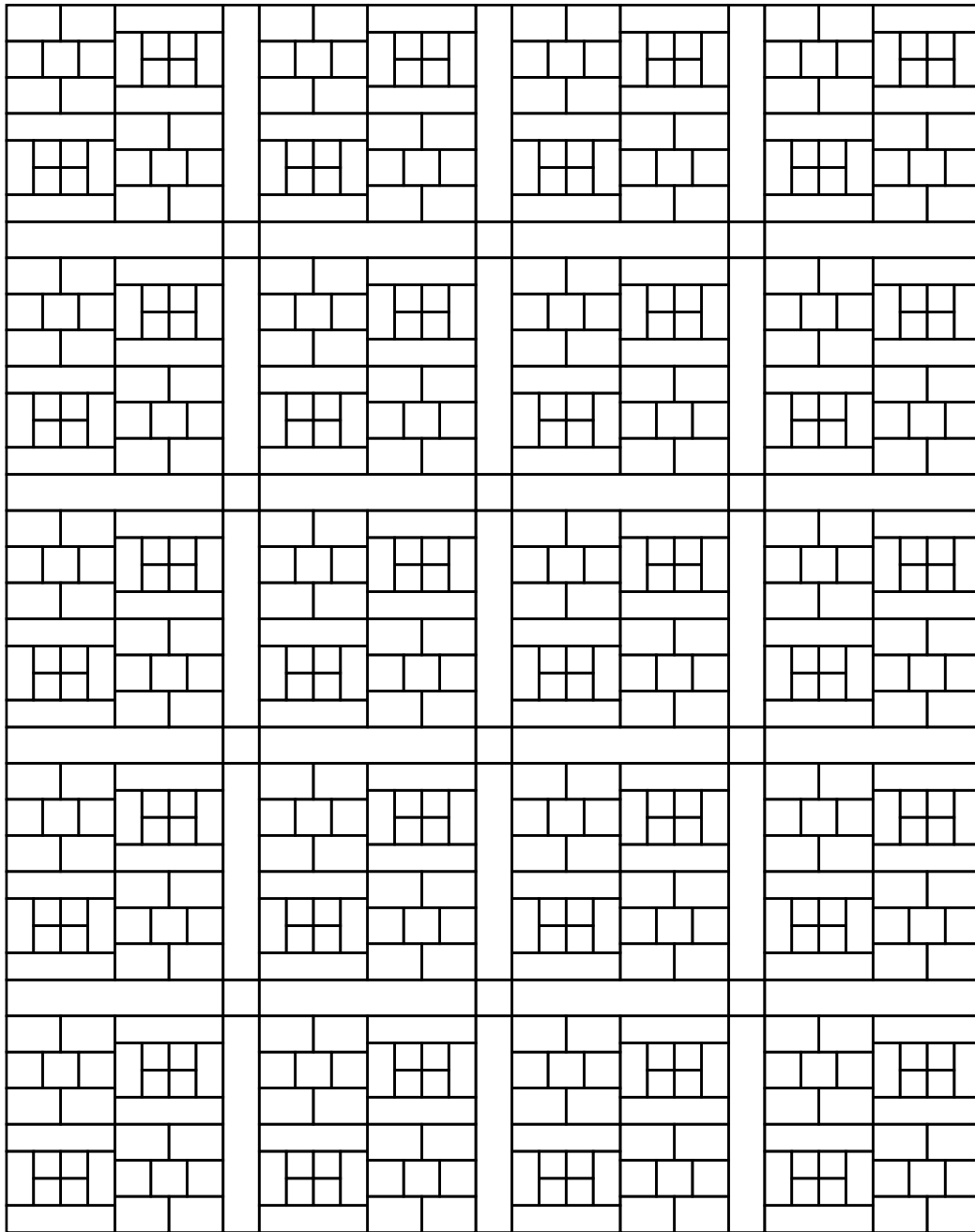
Online Community [Facebook.com/PatSloanQuiltFun](https://www.facebook.com/PatSloanQuiltFun)

(Page - 4)

I Love to Make Quilts.com

A site for Passionate Quilters

Hosted by Pat Sloan



Bonus! A Design page to color for fabric placement

Pat Sloan the voice of quilting™
www.patsloan.com

Website PatSloan.com - Articles & Tutorials blog.PatSloan.com
Online Community [Facebook.com/PatSloanQuiltFun](https://www.facebook.com/PatSloanQuiltFun)

(Page - 5)