

Flora Bella

Fabric Collection by P&B Textiles

FREE pattern
available on
our website,
pbtex.com



Petits Fours quilt by Pat Sloan

Size: 48" x 54"



pbtex.com



Petits Fours

Quilt by Pat Sloan using the *Flora Bella* fabric collection by P&B Textiles

Size: 48" x 54"

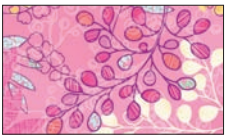
Fabric Requirements

FBEL
253 B



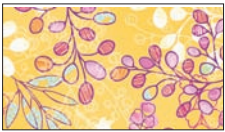
3/8 yd

FBEL
253 P



1/4 yd

FBEL
253 Y



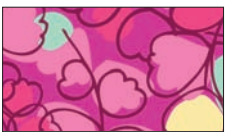
3/8 yd

FBEL
254 BT



1/4 yd

FBEL
254 FP



3/8 yd

FBEL
254 TP



1/4 yd

FBEL
255 B



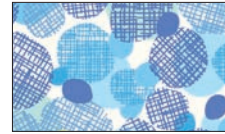
3/8 yd

FBEL
255 P



3/8 yd

FBEL
256 B



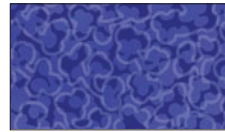
3/8 yd

FBEL
256 P



1/4 yd

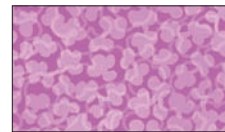
FBEL
257 B



1/2 yd

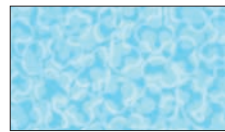
binding only

FBEL
257 C



3/8 yd

FBEL
257 LB



5/8 yd

FBEL
257 O



1/4 yd

FBEL
257 J



3/8 yd

FBEL
257 Y



3/8 yd

FBEL
257 G



1/4 yd

BACKING:

3 1/4 yards (per quilt) of any *Flora Bella* fabric



Petits Fours

Quilt by Pat Sloan using the *Flora Bella* fabric collection by P&B Textiles

Size: 48" x 54"

Cutting

As you cut the pieces, stack them in piles according to the block number.

FBEL 253 B, cut:

- (2) 7 1/2" x 5 1/2" rectangles (Block 2)
- (2) 4" x 4 1/2" rectangles (Block 2)
- (2) 2 1/2" x 2" rectangles (Block 2)
- (2) 2" x 4 1/2" rectangles (Block 2)
- (1) 5 1/2" x 9 1/2" rectangle (Block 3)
- (1) 3" x 5" rectangle (Block 3)
- (1) 3" x 3 1/2" rectangle (Block 3)
- (1) 2" x 9 1/2" rectangle (Block 3)
- (1) 3" x 2" rectangle (Block 3, center)

FBEL 253 P, cut:

- (2) 7 1/2" x 5 1/2" rectangles (Block 2)
- (2) 4" x 4 1/2" rectangles (Block 2)
- (2) 2 1/2" x 2" rectangles (Block 2)
- (2) 2" x 4 1/2" rectangles (Block 2)

FBEL 253 Y, cut:

- (2) 7 1/2" x 5 1/2" rectangles (Block 2)
- (2) 4" x 4 1/2" rectangles (Block 2)
- (2) 2 1/2" x 2" rectangles (Block 2)
- (2) 2" x 4 1/2" rectangles (Block 2)
- (2) 9 1/2" x 3 1/2" rectangles (Block 1)
- (2) 3" x 2" rectangles (Block 1, center)

FBEL 254 BT, cut:

- (2) 7 1/2" x 5 1/2" rectangles (Block 2)
- (2) 4" x 4 1/2" rectangles (Block 2)
- (2) 2 1/2" x 2" rectangles (Block 2)
- (2) 2" x 4 1/2" rectangles (Block 2)
- (1) 2 1/2" x 3" rectangle (Block 2, center)

FBEL 254 FP, cut:

- (1) 5 1/2" x 9 1/2" rectangle (Block 3)
- (1) 3" x 5" rectangle (Block 3)
- (1) 3" x 3 1/2" rectangle (Block 3)
- (1) 2" x 9 1/2" rectangle (Block 3)
- (1) 3" x 2" rectangle (Block 3, center)
- (1) 7 1/2" x 5 1/2" rectangle (Block 2)
- (1) 4" x 4 1/2" rectangle (Block 2)

- (1) 2 1/2" x 2" rectangle (Block 2)
- (1) 2" x 4 1/2" rectangle (Block 2)
- (1) 9 1/2" x 3 1/2" rectangle (Block 1)
- (1) 3" x 2" rectangle (Block 1, center)

FBEL 254 TP, cut:

- (1) 7 1/2" x 5 1/2" rectangle (Block 2)
- (1) 4" x 4 1/2" rectangle (Block 2)
- (1) 2 1/2" x 2" rectangle (Block 2)
- (1) 2" x 4 1/2" rectangle (Block 2)
- (2) 9 1/2" x 3 1/2" rectangles (Block 1)
- (2) 3" x 2" rectangles (Block 1, center)

FBEL 255 B, cut:

- (2) 7 1/2" x 5 1/2" rectangles (Block 2)
- (2) 4" x 4 1/2" rectangles (Block 2)
- (2) 2 1/2" x 2" rectangles (Block 2)
- (2) 2" x 4 1/2" rectangles (Block 2)
- (1) 2 1/2" x 2" rectangle (Block 2, center)
- (1) 9 1/2" x 3 1/2" rectangle (Block 1)
- (1) 3" x 2" rectangle (Block 1, center)
- (1) 3" x 2" rectangle (Block 3, center)

FBEL 255 P, cut:

- (2) 9 1/2" x 3 1/2" rectangles (Block 1)
- (2) 3" x 2" rectangles (Block 1, center)
- (1) 7 1/2" x 5 1/2" rectangle (Block 2)
- (1) 4" x 4 1/2" rectangle (Block 2)
- (1) 2 1/2" x 2" rectangle (Block 2)
- (1) 2" x 4 1/2" rectangle (Block 2)
- (1) 5 1/2" x 9 1/2" rectangle (Block 3)
- (1) 3" x 5" rectangle (Block 3)
- (1) 3" x 3 1/2" rectangle (Block 3)
- (1) 2" x 9 1/2" rectangle (Block 3)
- (1) 3" x 2" rectangle (Block 3, center)

FBEL 256 B, cut:

- (1) 9 1/2" x 3 1/2" rectangle (Block 1)
- (1) 3" x 2" rectangle (Block 1, center)
- (1) 7 1/2" x 5 1/2" rectangle (Block 2)



Petits Fours

Quilt by Pat Sloan using the *Flora Bella* fabric collection by P&B Textiles

Size: 48" x 54"

Cutting *Continued*

- (1) 4" x 4 1/2" rectangle (Block 2)
- (1) 2 1/2" x 2" rectangle (Block 2)
- (1) 2" x 4 1/2" rectangle (Block 2)
- (1) 5 1/2" x 9 1/2" rectangle (Block 3)
- (1) 3" x 5" rectangle (Block 3)
- (1) 3" x 3 1/2" rectangle (Block 3)
- (1) 2" x 9 1/2" rectangle (Block 3)

FBEL 256 P, cut:

- (2) 7 1/2" x 5 1/2" rectangles (Block 2)
- (2) 4" x 4 1/2" rectangles (Block 2)
- (2) 2 1/2" x 2" rectangles (Block 2)
- (2) 2" x 4 1/2" rectangles (Block 2)
- (1) 2 1/2" x 3" rectangle (Block 2, center)
- (1) 3" x 2" rectangle (Block 3, center)

FBEL 257 C, cut:

- (1) 5 1/2" x 6 1/2" rectangle (Block 1)
- (1) 3" x 2" rectangle (Block 1)
- (1) 3" x 3 1/2" rectangle (Block 1)
- (1) 2" x 6 1/2"v rectangle (Block 1)
- (1) 5 1/2" x 9 1/2" rectangle (Block 3)
- (1) 3" x 5" rectangle (Block 3)
- (1) 3" x 3 1/2" rectangle (Block 3)
- (1) 2" x 9 1/2" rectangle (Block 3)

FBEL 257 LB, cut:

- (1) 5 1/2" x 6 1/2" rectangle (Block 1)
- (1) 3" x 2" rectangle (Block 1)
- (1) 3" x 3 1/2" rectangle (Block 1)
- (1) 2" x 6 1/2" rectangle (Block 1)
- (1) 7 1/2" x 5 1/2" rectangle (Block 2)
- (1) 4" x 4 1/2" rectangle (Block 2)
- (1) 2 1/2" x 2" rectangle (Block 2)
- (1) 2" x 4 1/2" rectangle (Block 2)
- (3) 2 1/2" x 3" rectangles (Block 2, center)
- (2) 5 1/2" x 9 1/2" rectangles (Block 3)
- (2) 3" x 5" rectangles (Block 3)
- (2) 3" x 3 1/2" rectangles (Block 3)
- (2) 2" x 9 1/2" rectangles (Block 3)
- (1) 3" x 2" rectangle (Block 3, center)

FBEL 257 O, cut:

- (2) 5 1/2" x 6 1/2" rectangles (Block 1)
- (2) 3" x 2" rectangles (Block 1)
- (2) 3" x 3 1/2" rectangles (Block 1)
- (2) 2" x 6 1/2" rectangles (Block 1)
- (1) 2 1/2" x 3" rectangle (Block 2, center)
- (1) 3" x 2" rectangle (Block 3, center)

FBEL 257 J, cut:

- (2) 5 1/2" x 6 1/2" rectangles (Block 1)
- (2) 3" x 2" rectangles (Block 1)
- (2) 3" x 3 1/2" rectangles (Block 1)
- (2) 2" x 6 1/2" rectangles (Block 1)
- (4) 2 1/2" x 3" rectangles (Block 2, center)
- (1) 5 1/2" x 9 1/2" rectangles (Block 3)
- (1) 3" x 5" rectangle (Block 3)
- (1) 3" x 3 1/2" rectangle (Block 3)
- (1) 2" x 9 1/2" rectangle (Block 3)

FBEL 257 Y, cut:

- (1) 7 1/2" x 5 1/2" rectangle (Block 2)
- (1) 4" x 4 1/2" rectangle (Block 2)
- (1) 2 1/2" x 2" rectangle (Block 2)
- (1) 2" x 4 1/2" rectangle (Block 2)
- (3) 2 1/2" x 3" rectangles (Block 2, center)
- (1) 5 1/2" x 9 1/2" rectangles (Block 3)
- (1) 3" x 5" rectangle (Block 3)
- (1) 3" x 3 1/2" rectangle (Block 3)
- (1) 2" x 9 1/2" rectangle (Block 3)
- (1) 3" x 2" rectangles (Block 3, center)

FBEL 257 YG, cut:

- (3) 5 1/2" x 6 1/2" rectangles (Block 1)
- (3) 3" x 2" rectangles (Block 1)
- (3) 3" x 3 1/2" rectangles (Block 1)
- (3) 2" x 6 1/2" rectangles (Block 1)
- (4) 2 1/2" x 3" rectangles (Block 2, center)
- (1) 3" x 2" rectangle (Block 3, center)

FBEL 257 B, cut:

- (6) 2 1/2" x 42" binding strips



Petits Fours

Quilt by Pat Sloan using the *Flora Bella* fabric collection by P&B Textiles

Size: 48" x 54"

Assembly

Refer to the block diagrams and quilt photo for placement guidance throughout.

BLOCK 1

For each block, you'll need the following pieces:

Fabric 1: (1) 5 1/2" x 6 1/2" rectangle, (1) 3" x 2" rectangle, (1) 3" x 3 1/2" rectangle, and (1) 2" x 6 1/2" rectangle

Fabric 2: (1) 9 1/2" x 3 1/2" rectangle and (1) 3" x 2" rectangle

Join the 3" x 2" and 3" x 3 1/2" fabric 1 rectangles to opposite sides of the 3" x 2" fabric 2 rectangle to make the center strip. Join 5 1/2" x 6 1/2" and 2" x 6 1/2" fabric 1 rectangles to opposite sides of the center strip; then add the 9 1/2" x 3 1/2" fabric 2 rectangle to the top edge to complete the block. The block should measure 9 1/2" square. Make a total of 9 blocks.

BLOCK 2

For each block, you'll need the following pieces:

Fabric 1: (1) 7 1/2" x 5 1/2" rectangle, (1) 4" x 4 1/2" rectangle, (1) 2 1/2" x 2" rectangle and (1) 2" x 4 1/2" rectangle

Fabric 2: (1) 2 1/2" x 3" rectangle

Join the 2 1/2" x 3" fabric 2 rectangle to the 2 1/2" x 2" fabric 1 rectangle to make the center strip. Sew 2" x 4 1/2" and 4" x 4 1/2" rectangles to opposite sides of the center strip; then add the 7 1/2" x 5 1/2" rectangle to complete the block. The block should measure 7 1/2" x 9 1/2". Make a total of 18 blocks.

BLOCK 3

For each block, you'll need the following pieces:

Fabric 1: (1) 5 1/2" x 9 1/2" rectangle, (1) 3" x 5" rectangle, (1) 3" x 3 1/2" rectangle, and (1) 2" x 9 1/2" rectangle

Fabric 2: (1) 3" x 2" rectangle

Join the 3" x 5" and 3" x 3 1/2" fabric 1 rectangles to opposite sides of the 3" x 2" fabric 2 rectangle to make the center strip. Join 5 1/2" x 9 1/2" and 2" x 9 1/2" fabric 1 rectangles to opposite sides of the center strip to complete the block. The block should measure 9 1/2" square. Make a total of 9 blocks.

JOINING THE BLOCKS

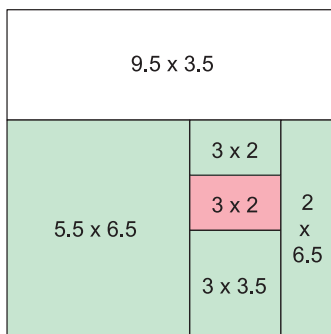
For rows 1, 3, and 5, lay out 3 of block 1 and 3 of block 2, alternating the blocks and rotating the middle block 1 as shown in the quilt photo. Join the blocks and press the seam allowances in one direction.

For rows 2, 4, and 6, lay out 3 of block 2 and 3 of block 3, alternating the blocks as shown in the photo. Join the blocks and press the seam allowances in one direction.

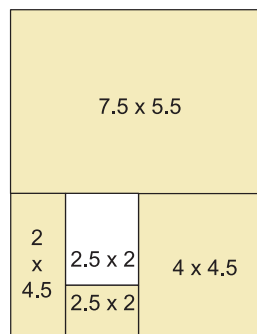
Join the rows and press.

Layer the quilt with batting and backing; baste.

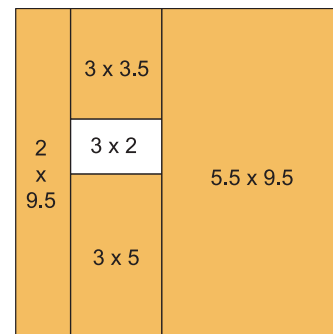
Quilt as desired and bind the edges to finish.



Block 1



Block 2



Block 3