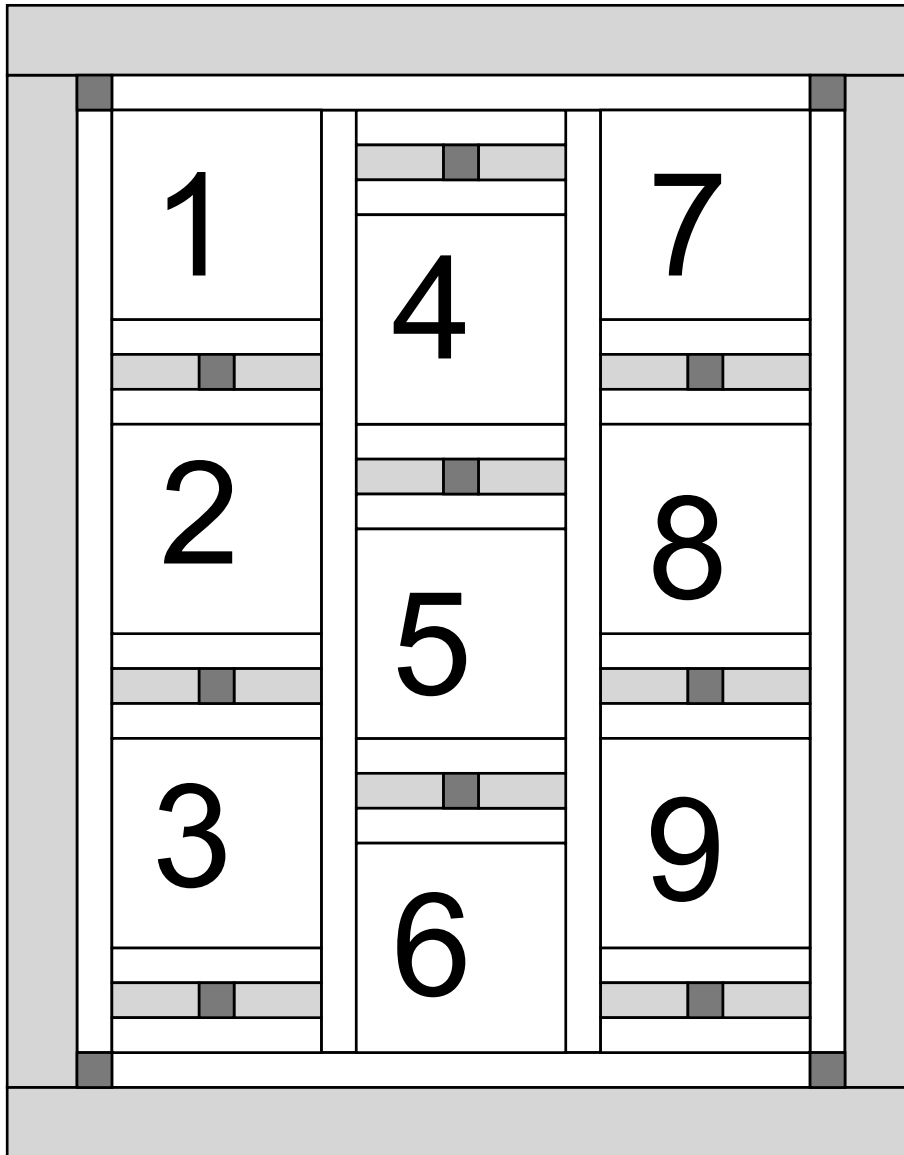


2024 Ode to our National Parks

Supply List and Layout directions

Sept 11, 2024 to Nov 13, 2024

*** Join me for a fun 10 week look at our National Parks! ***



Size 52.5" x 66.5"

Pat Sloan the voice of quilting™
www.patsloan.com

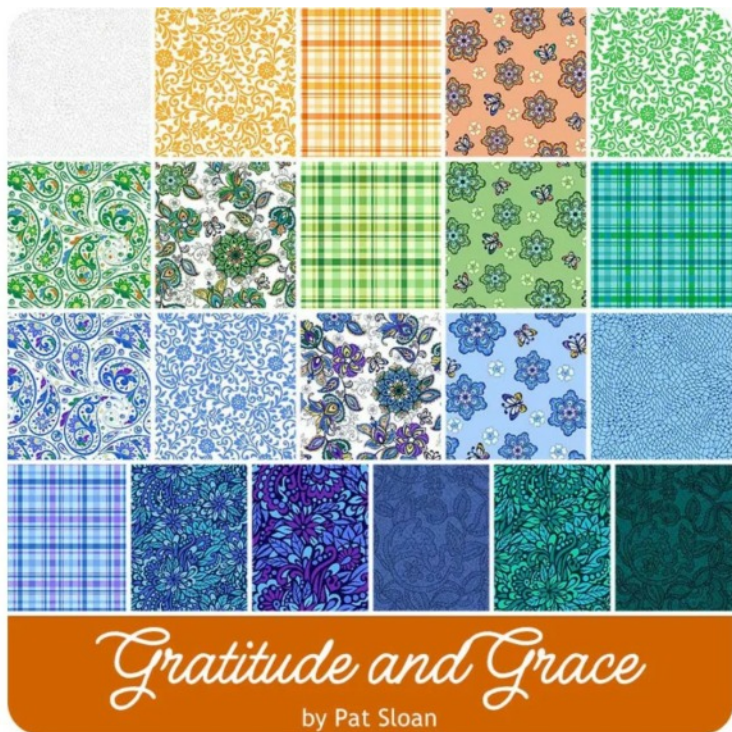
I hope you enjoy making this quilt. These instructions may not be reproduced by any mechanical or electronic means, including photocopying. Making copies for any purpose other than your own personal use is a violation of copyright laws. ©2024 Pat Sloan & Co. LLC, All rights reserved.

I Love to Make Quilts.com

A site for Passionate Quilters
Hosted by Pat Sloan

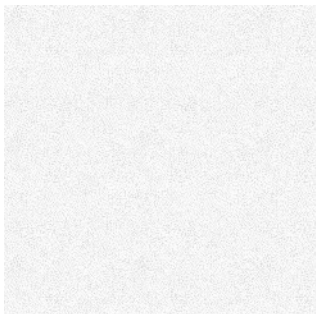
(1)

2024 Ode to our National Parks Supply list



1 1 - Fat 8th or Fat Quarter Bundle of your favorite fabric. I am using a FQ bundle Of my Gratitude and Grace

I make the blocks each week working from this collection.



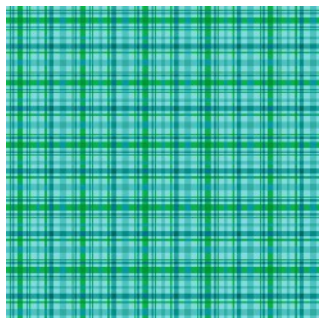
2

2.5 yds background
Of Gratitude and Grace
17089 - 08 white tonal



3

2 yds Border and Binding
17085-84 teal



4

Backing - 6 yds
17086-84 Teal plaid

Pat Sloan the voice of quilting™

www.patsloan.com

I hope you enjoy making this quilt. These instructions may not be reproduced by any mechanical or electronic means, including photocopying.

Making copies for any purpose other than your own personal use is a violation of copyright laws. ©2024 Pat Sloan & Co. LLC, All rights reserved.

I Love to Make Quilts.com

A site for Passionate Quilters
Hosted by Pat Sloan

(2)

2024 Ode to our National Parks

Layout Cutting Directions

Background fabric for Sashing and inner borders

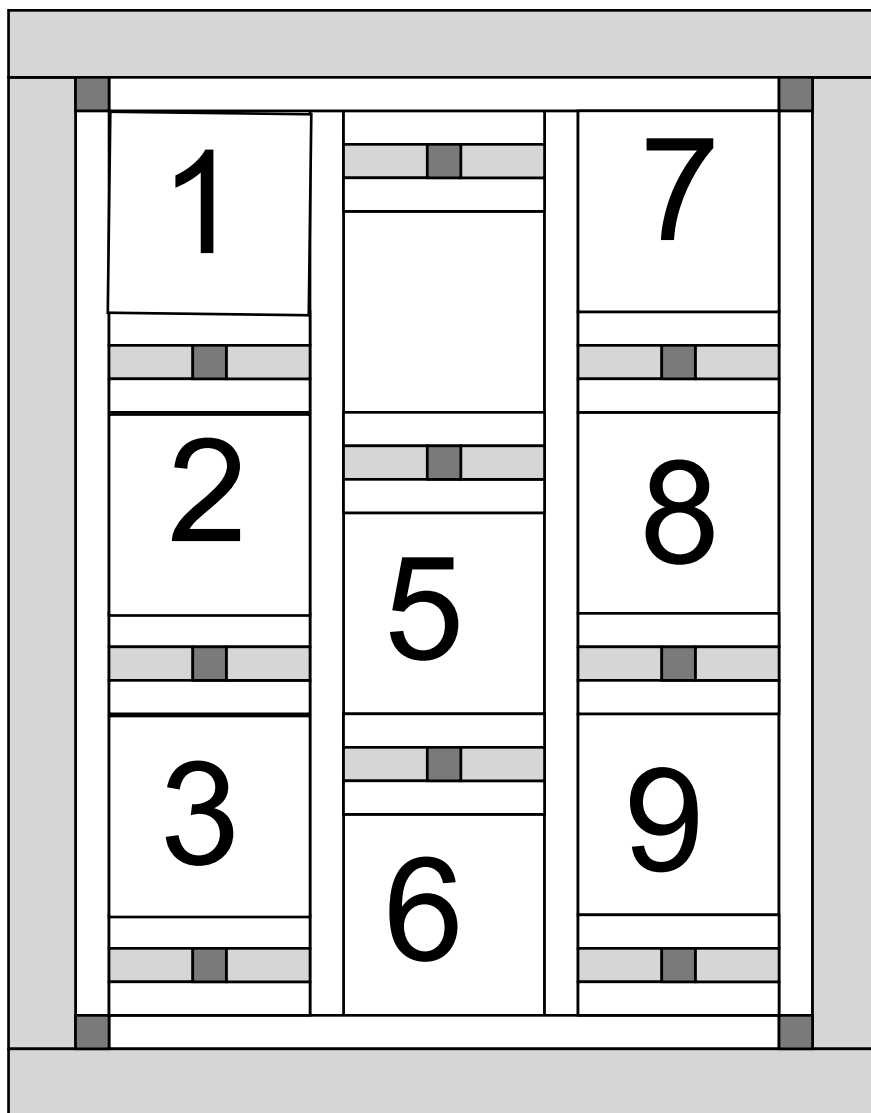
- Cut 2 strips 2.5" x 40.5"
- Cut 4 strips 2.5" x 54.5"
- Cut 18 strips 2.5" x 12 1/2"

Border and sashing from The same fabric

- Cut 2 strips 4.5" x 58.5"
- Cut 2 strips 4.5" x 52.5"
- Cut 18 strips 2.5" x 5.5"

Sashing squares

- #### And inner border squares
- From the block scraps
- Cut 13 squares 2.5" x 2.5"



Size 52.5" x 66.5"

Pat Sloan the voice of quilting™

www.patsloan.com

I hope you enjoy making this quilt. These instructions may not be reproduced by any mechanical or electronic means, including photocopying.

Making copies for any purpose other than your own personal use is a violation of copyright laws. ©2024 Pat Sloan & Co. LLC, All rights reserved.

I Love to Make Quilts.com

A site for Passionate Quilters

Hosted by Pat Sloan

(3)

2024 Ode to our National Parks

Layout Cutting Directions

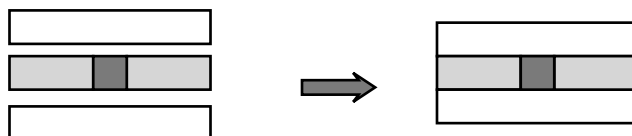
Follow the diagram

1) Sew a 2.5" x 5.5" sashing strip to each
Side of a 2.5" x 2.5" square
Measure 2.5" x 12.5"
Make 9 sets

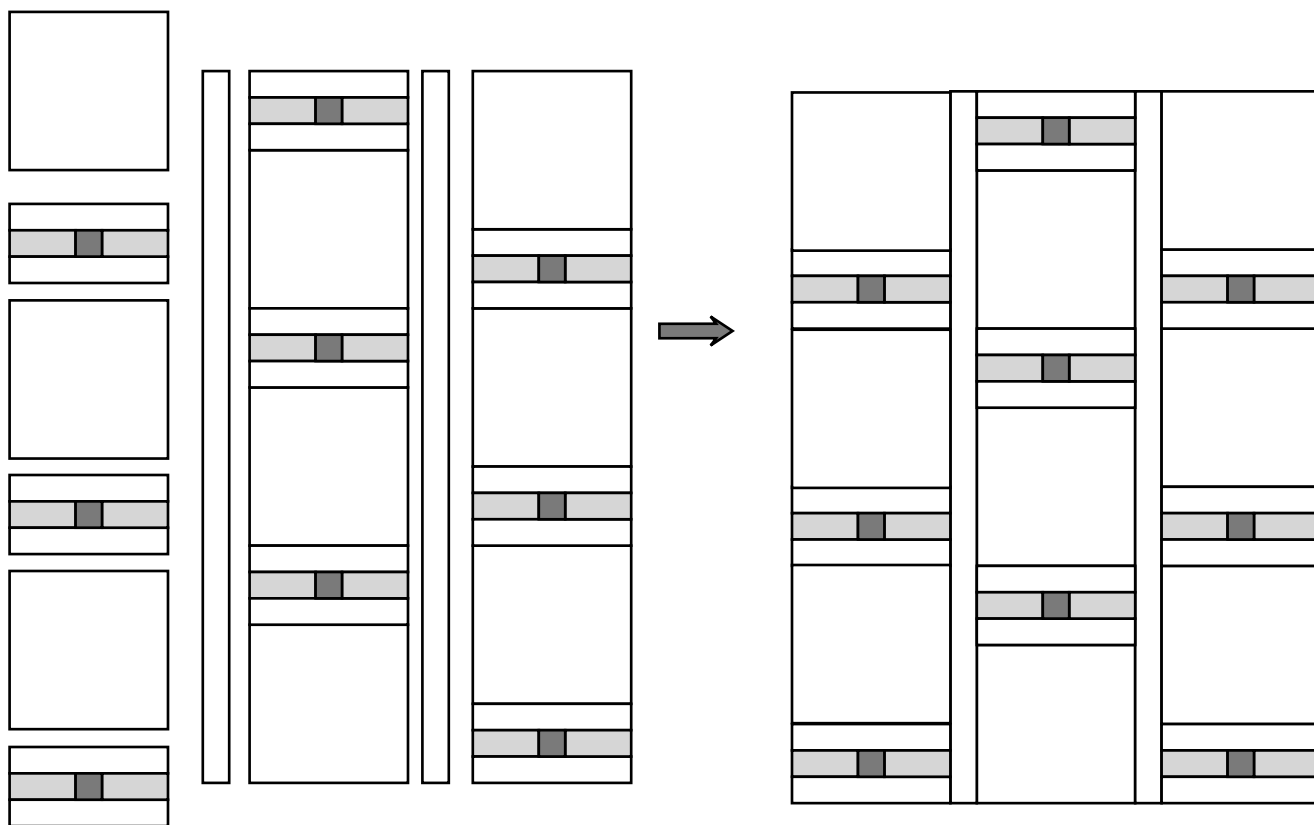


2) Following the diagram

Sew a background 2.5" x 12.5" strip to both long
Sides of the strip set above
Measure 6.5" x 12.5"
Make 9 sets



3) **Following the diagram** sew 3 blocks alternating with the sashing units above into columns
Sew the columns and 2.5" x 54.5" sashing strips to each other
Measure 40.5" x 54.5"



Pat Sloan the voice of quilting™

www.patsloan.com

I hope you enjoy making this quilt. These instructions may not be reproduced by any mechanical or electronic means, including photocopying.

Making copies for any purpose other than your own personal use is a violation of copyright laws. ©2024 Pat Sloan & Co. LLC, All rights reserved.

I Love to Make Quilts.com

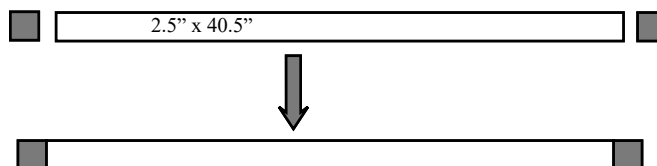
A site for Passionate Quilters
Hosted by Pat Sloan

2024 Ode to our National Parks

Layout Cutting Directions

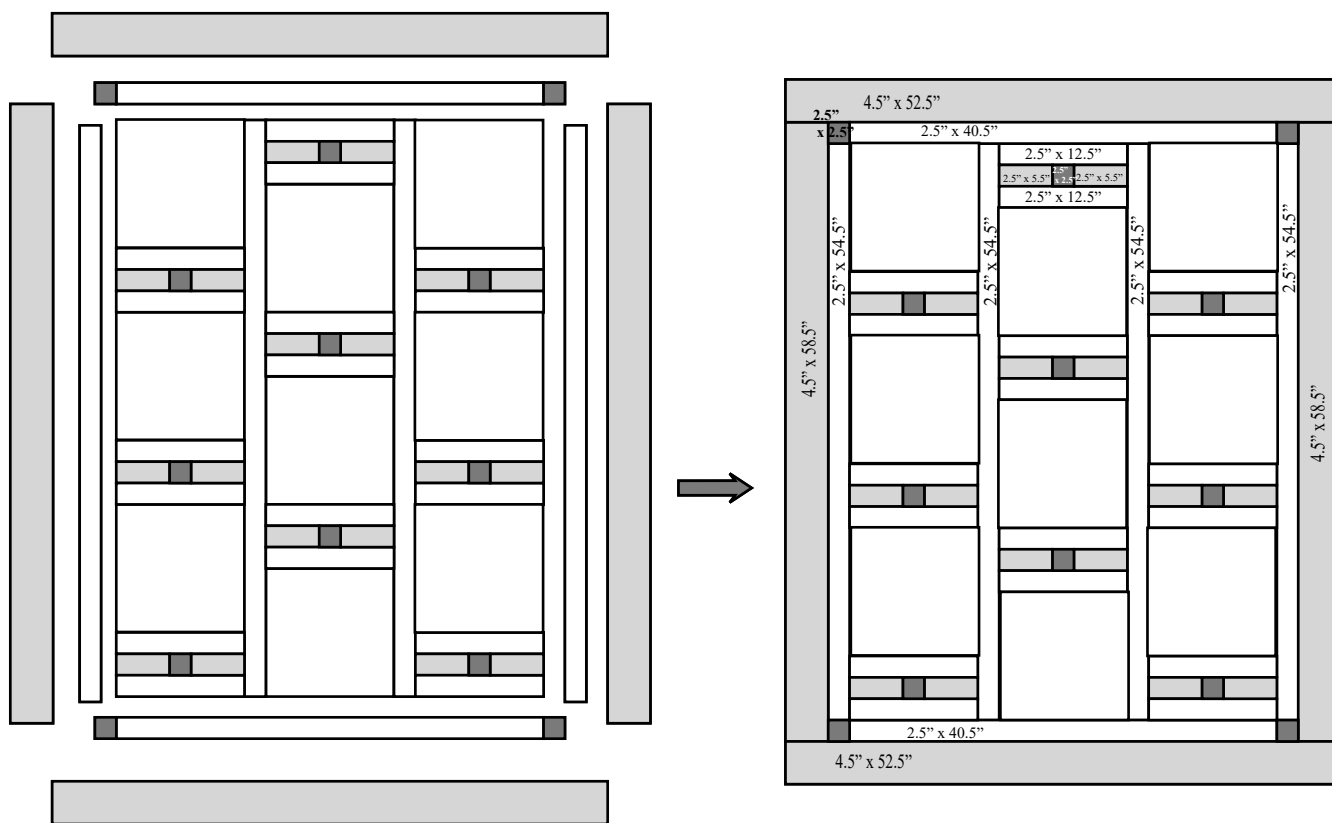
Follow the diagram

4) Sew a square to each side of the inner borders
 Make 2
 Measures 2.5" x 44.5"



Follow the diagram

5) Sew the side inner borders to the center
 Sew the top and bottom inner borders to the center
 Sew the side borders to the center
 Sew the top and bottom borders to the center
 Measures 52.5" x 66.5"



Pat Sloan the voice of quilting™

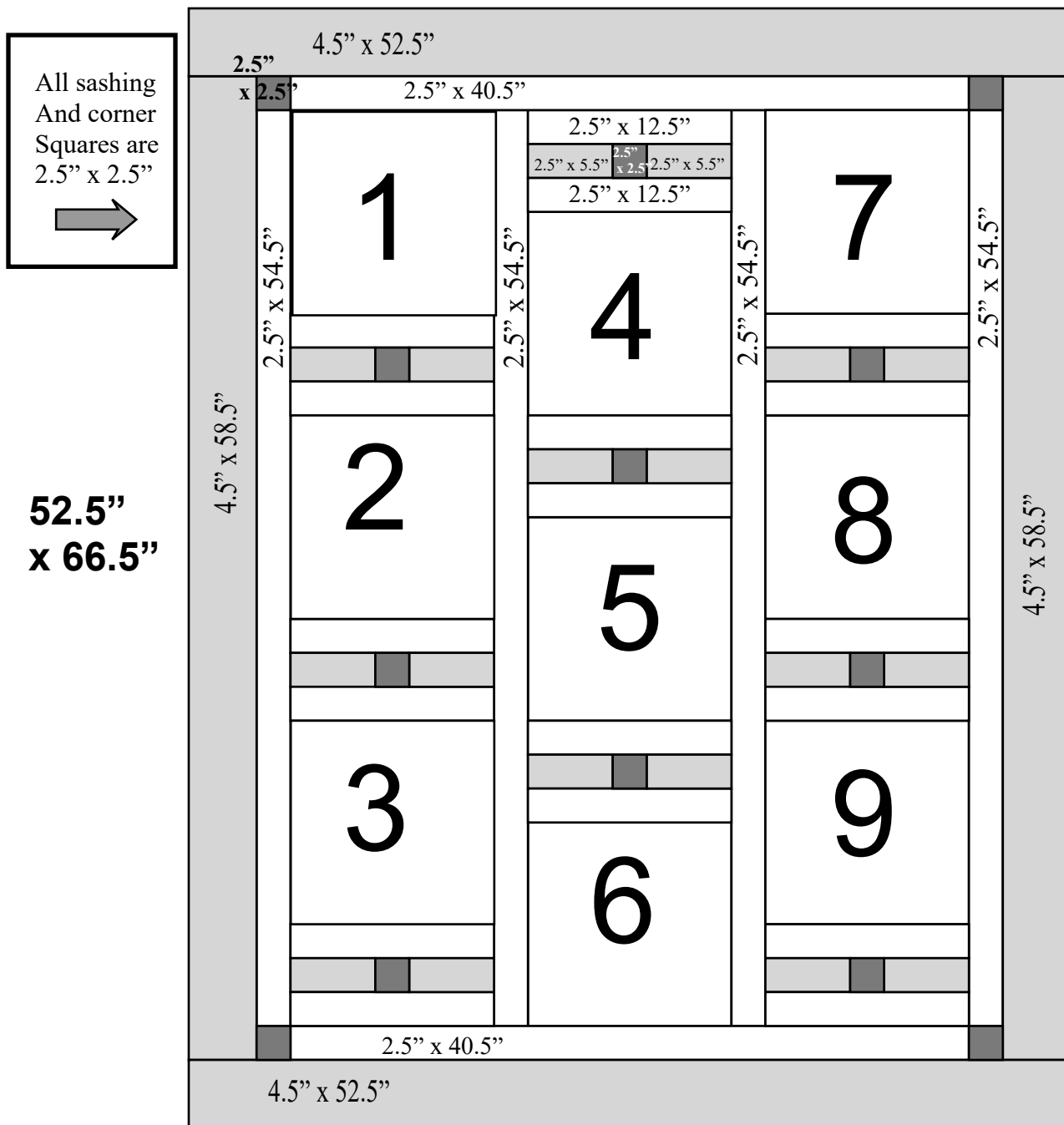
www.patsloan.com

I hope you enjoy making this quilt. These instructions may not be reproduced by any mechanical or electronic means, including photocopying. Making copies for any purpose other than your own personal use is a violation of copyright laws. ©2024 Pat Sloan & Co. LLC, All rights reserved.

I Love to Make Quilts.com

A site for Passionate Quilters
 Hosted by Pat Sloan

2024 Ode to our National Parks Layout Cutting Directions



Pat Sloan the voice of quilting™
www.patsloan.com

I hope you enjoy making this quilt. These instructions may not be reproduced by any mechanical or electronic means, including photocopying. Making copies for any purpose other than your own personal use is a violation of copyright laws. ©2024 Pat Sloan & Co. LLC, All rights reserved.

I Love to Make Quilts.com

A site for Passionate Quilters
Hosted by Pat Sloan