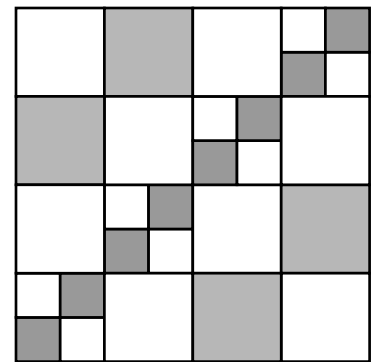


# Summer Soiree

## Block 3 – The Guest List

Hosted by Pat Sloan At [Ilovetomakequilts.com](http://Ilovetomakequilts.com)

Your Guest list is key to so much of what you will do. How many people will you invite, and who will they be?. Your summer soiree might have a group of tried and true friends, or you might be having two families meet for a bridal shower.



**Block 12.5" x 12.5"**  
Finished size 12" x 12"

I remember planning my Dad's 50th birthday bash, it was a larger party that included many people he worked with, his neighbors, family, and other friends. The night was so exciting as we did a Superman Theme since he was born the same year as Superman! The mix of people made it an exciting and fun night!

Enter your email for my notice of each new block release & join my online group to share with everyone!

## Cutting & Sewing

### Light Fabric - you can use multiple Fabrics

- Cut 8 squares 3.5" x 3.5"
- Cut 8 squares 2" x 2"

### Medium Fabric

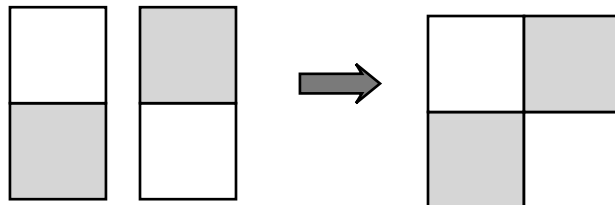
- Cut 4 squares 3.5" x 3.5"

### Dark Fabric

- Cut 8 squares 2" x 2"

## Directions

- 1) Sew 2 light 2" squares and a 2 dark 2" Squares to form a 4-patch  
Measures 3.5" x 3.5" square  
Make 4 units



See my Book  
"Pat Sloan's Teach Me to Machine Quilt"  
For my tired and true techniques to get  
You quilting your own quilts!



**Pat Sloan** the voice of quilting™  
[www.patsloan.com](http://www.patsloan.com)

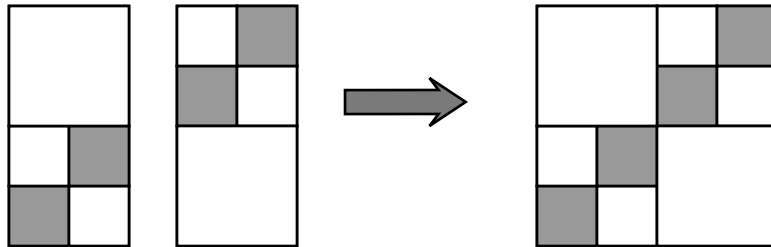
I hope you enjoy making this quilt. These instructions may not be reproduced by any mechanical or electronic means, including photocopying. Making copies for any purpose other than your own personal use is a violation of copyright laws. ©2021 Pat Sloan & Co. LLC, All rights reserved.

*I Love to Make Quilts.com*

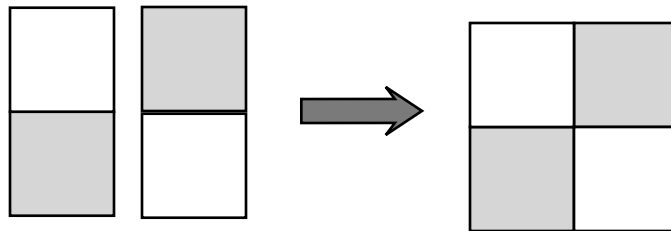
A site for Passionate Quilters  
Hosted by Pat Sloan

## Directions

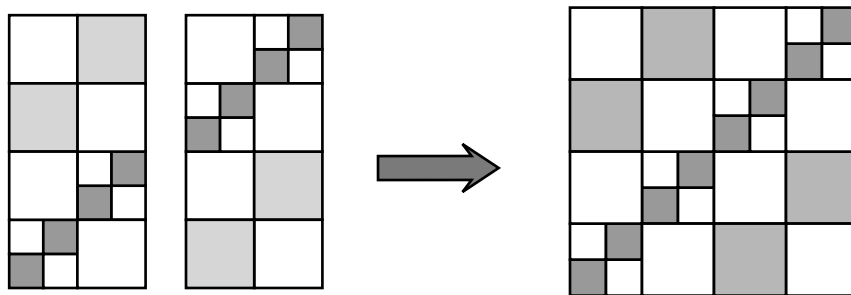
2) Following the diagram, sew 2 light 3.5" squares and a 2 4-patch units from previous step.  
Measures 6.5" x 6.5" square  
Make 2 units



3) Sew 2 light 3.5" squares and a 2 medium 3.5" squares to form a 4-patch  
Measures 6.5" x 6.5" square  
Make 2 units



4) Following the diagram, sew the blocks from step #2 and step #3 together  
Measures 12.5" x 12.5" square  
Make 1

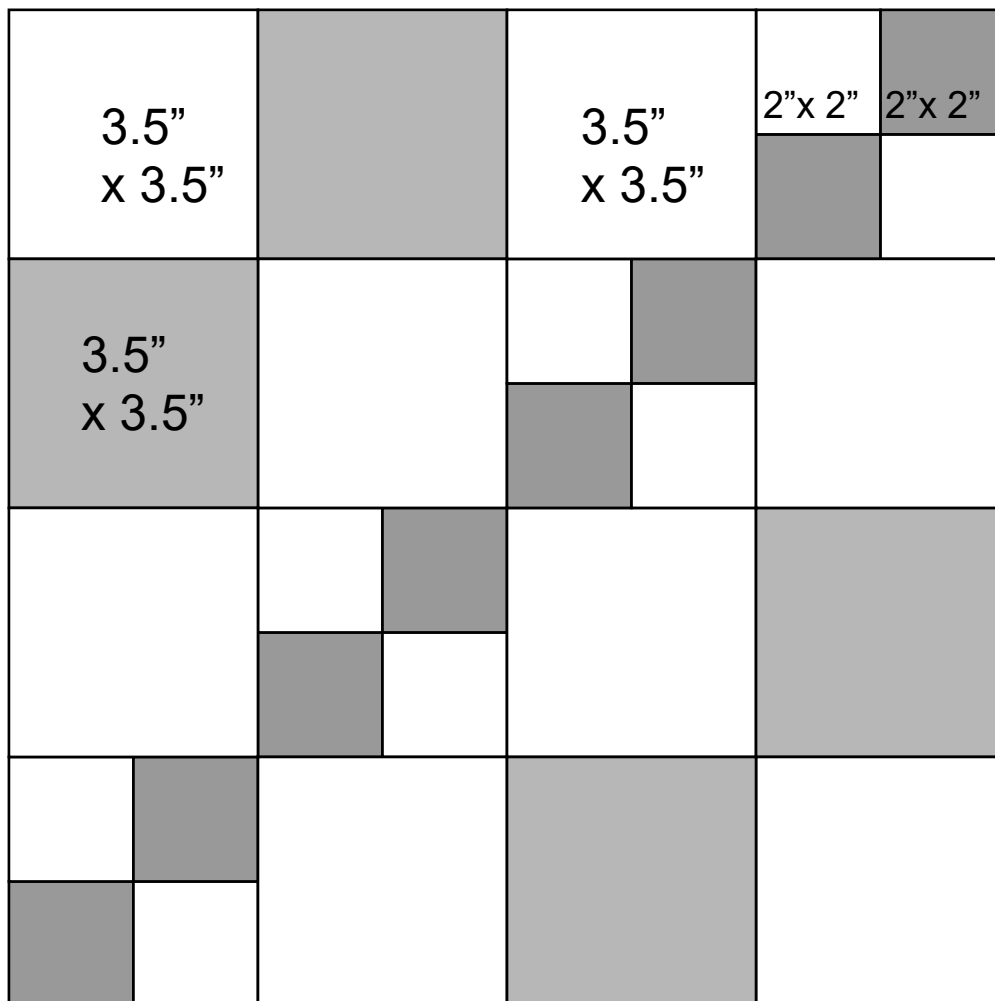


## Block 3 – The Guest List

I hope you enjoy making this quilt. These instructions may not be reproduced by any mechanical or electronic means, including photocopying. Making copies for any purpose other than your own personal use is a violation of copyright laws. ©2021 Pat Sloan & Co. LLC, All rights reserved.

## Unfinished / CUTTING Sizes

See directions for more details



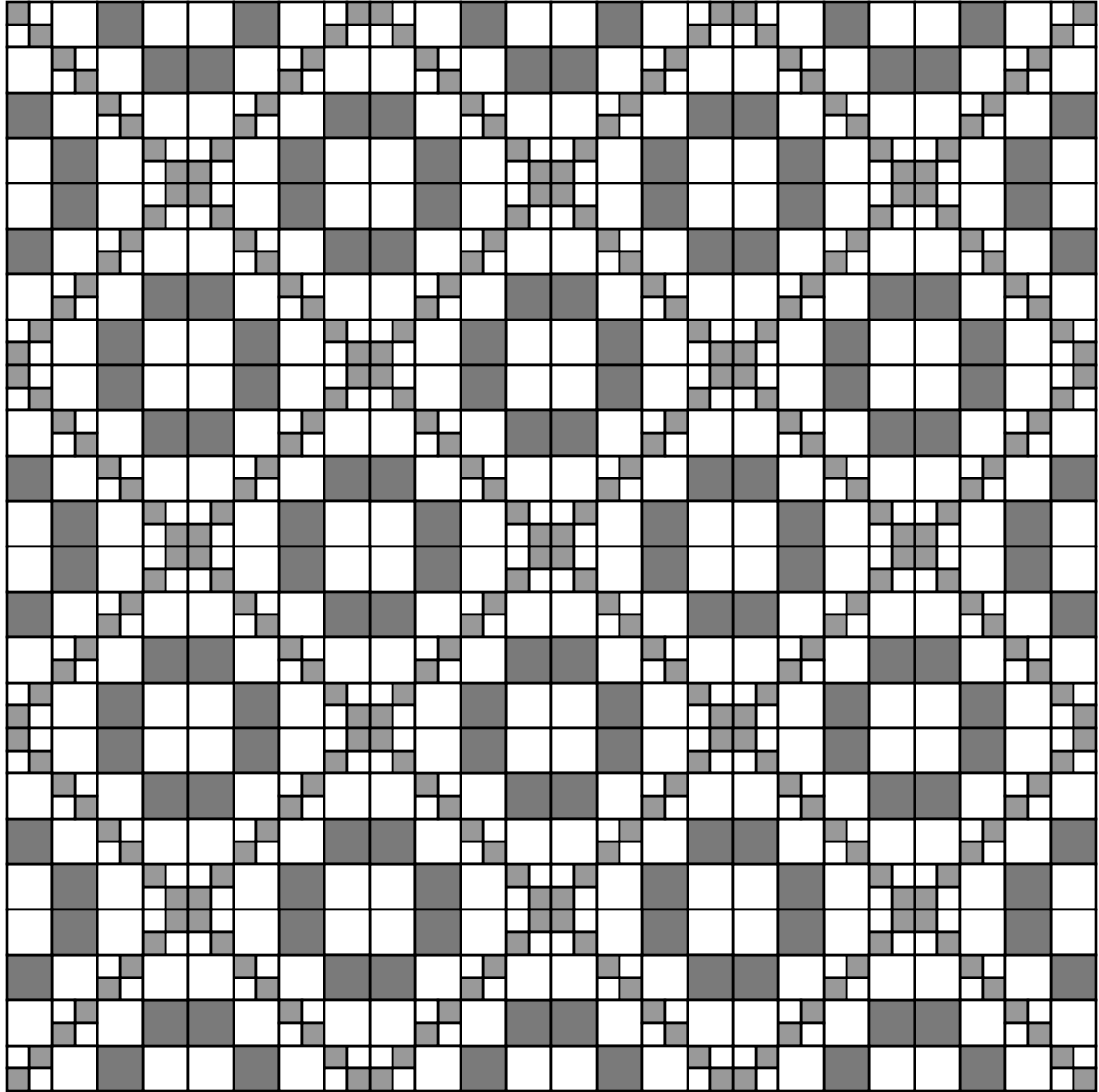
**Block is 12.5" x 12.5"**

In the Quilt it is finished size 12" x 12"

### Block 3 – The Guest List

I hope you enjoy making this quilt. These instructions may not be reproduced by any mechanical or electronic means, including photocopying. Making copies for any purpose other than your own personal use is a violation of copyright laws. ©2021 Pat Sloan & Co. LLC, All rights reserved.

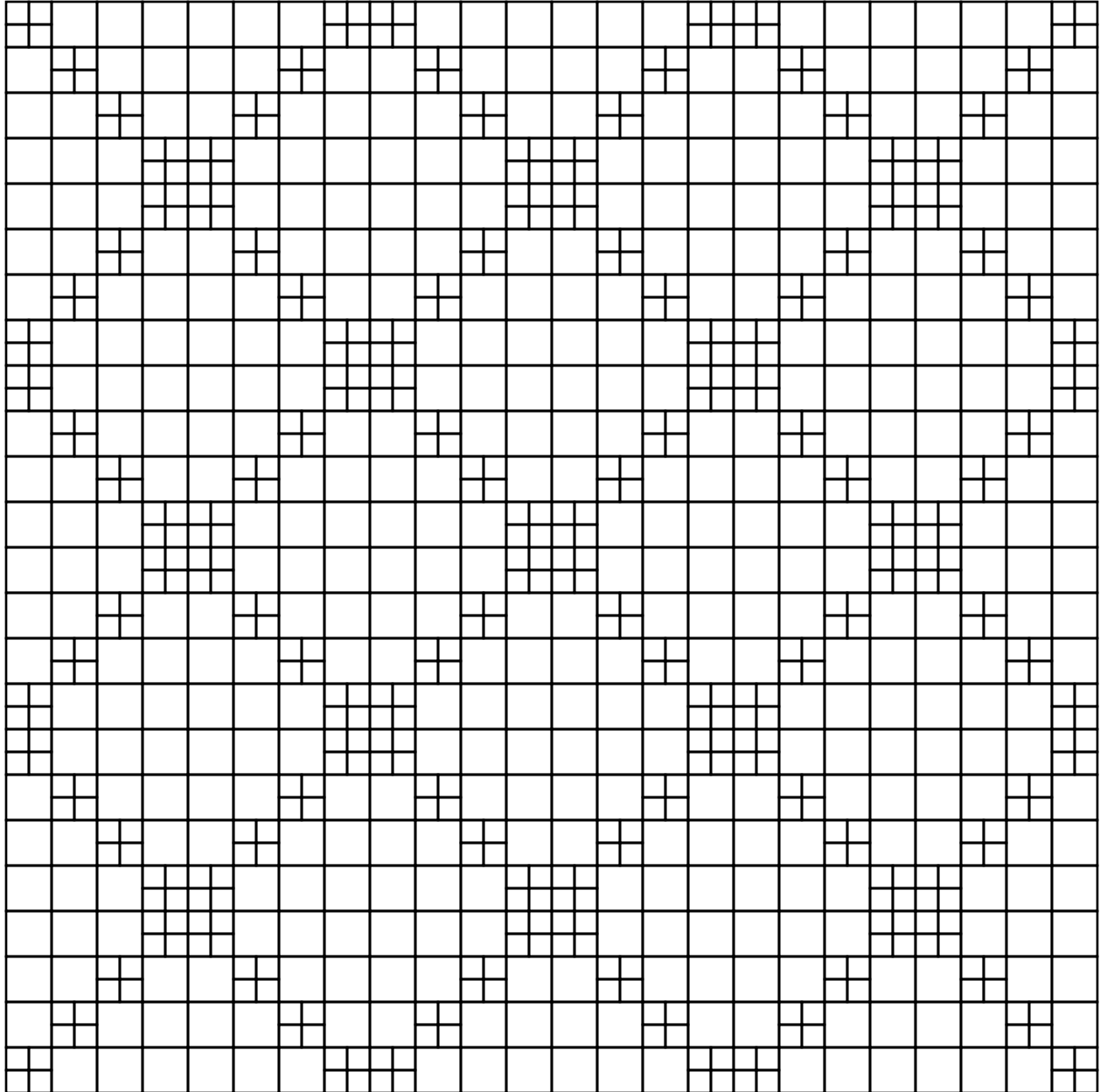
**BONUS PROJECT**



**72.5" x 72.5" quilt**  
**36 blocks**

**Block 3 – The Guest List**

I hope you enjoy making this quilt. These instructions may not be reproduced by any mechanical or electronic means, including photocopying. Making copies for any purpose other than your own personal use is a violation of copyright laws. ©2021 Pat Sloan & Co. LLC, All rights reserved.



## **BONUS Project Coloring Page**

### **Block 3 – The Guest List**

I hope you enjoy making this quilt. These instructions may not be reproduced by any mechanical or electronic means, including photocopying. Making copies for any purpose other than your own personal use is a violation of copyright laws. ©2021 Pat Sloan & Co. LLC, All rights reserved.

*Pat Sloan* the voice of quilting™  
www.patsloan.com